



COMPANY PROFILE

About us

Morelux was formed in 2000. We have over 750,000 square feet modern facility and have over 600 employees. Our roots go back to the late 80's with Morelux Plastics, a highly successful component manufacturer specializing in supplying lenses, refractors and globes to the lighting industry. Today Morelux specializes in designing, engineering, manufacturing, and distributing state-of-the-art lighting fixtures. Morelux affording complete self-reliance and cost savings for the customers. Our primary purpose is to provide our customers quality products as requested, as designed and on-time. To do this, we draw on a global pool of resources to ensure our customers get nothing but the best.

Manufacturing & Beyond

We have a wide range of processes and materials that we are experts at, and modern well-maintained equipment designed to accomplish most manufacturing tasks.



1 STEEL Stamping, CNC Machining, Laser-Cutting, Welding, Casting, Spinning, Hydro Form, Fabrication, Arc Welding.

2 FINISH Chemical treatment, Polyester powder coat, Wet paint, Galvanized, Anodizing, Vacuum metalizing, Brushed satin, Chrome Nickel, Mirror, & cold-mirror.

3 ALUMINUM High & Low-pressure die-cast, Gravity/Permanent molding, Sand-cast, Spinning, Hydro form, Welding, Fabrication, TIG & MIG Welding.

COMPANY PROFILE

- 4 BRASS & BRONZE** High-pressure injection, Casting, CNC machining, Fabrication.
- 5 GRP** Injection molding, Compression molding.
- 6 GLASS** Press-Borosilicate & Soda-lime, Water jet cutting, Silkscreen, Tempering, Annealing, Acid treatment & etching.
- 7 PLASTICS** Injection molding, Injection blowmolding, Extrusion, blowmolding, Vacuum forming, Roto-molding.
- 8 ASSEMBLY & FABRICATION** Wiring, Shaping, Welding, Fixture Construction
- 9 TOOLING** Manufacturing tools for Stamping, Spinning, Hydroform, Injection die-cast, Gravity, Sand-cast, Press glass Extrusion, Injection, Blow-molding, Vacuum, Roto-molding.
- 10 TESTING** Vibration, X-Ray, UL, CSA, ETL, CNC tracing, IP rating, Pressure/explosion testing, Photometric testing, Corrosion salt testing and much more.

Taking Quality Control To A Whole New Level

Here at Morelux, we truly believe that a product of good quality speaks for itself; and coming into this new decade, we have pushed the envelope on industry standards to make our quality even greater. Our wholly vertically integrated company structure allows us to have the expertise and ability to engage and monitor every step of the manufacturing process, from: CNC machining and laser-cutting steel, chemical treatment and powder coating, high & low-pressure die-casting aluminum, injection and casting brass/bronze, tempering and annealing glass, injection molding plastics, full assembly and fabrication, manufacturing tooling, to IP rating and photometric testing, etc.; all of which follow strict rules of our "18-Point Production Part Approval Process (PPAP) System" to ensure each process is executed to the highest of standards. In turn, allowing your business to thrive with the confidence that the quality of our products exceeds your expectations.



COMPANY PROFILE

New Product Development

Morelux is far more than a custom manufacturer. We provide complete turnkey new product development services for our customers. We can be involved as little or as much as you desire with your new product development cycle. As our designers and engineers have been involved with our factories for many years, they can often incorporate cost savings, designs and unique processes to make the production of your custom product as economical as possible

Let us help you in bringing new concepts to life and design a dedicated solution that's just right for you. Use our team of project managers, designers, engineers, and technicians as an extension of your own design team-- the whole of Morelux capabilities are available to help you increase your new product development throughput. We are dedicated to designing and manufacturing to your exacting standards, compliant with the latest trends in technology and industry/energy standards



YOU COME UP WITH THE CONCEPT AND WE'LL DO THE REST!

CONCEPT BY CUSTOMER

From initial sketches to comprehensive 3D modeling & rendering.

DESIGN & ENGINEERING

Broad spectrum of services from electrical and mechanical, to optical and photometric engineering.

PROTOTYPING

Many years of experience prototyping of one-offs for customer approval.

PRODUCTION

Now we are ready for production. We can do small runs or large ones. We will advise you of the manufacturing efficiencies and cost savings of the different options.

TOOLING

Extensive experience in creating tools in our in-house facility for a number of processes & materials including diecast aluminum, stamping and punching, plastic injection molding, extrusions, plastic injection molding, extrusions, blow molding and thermoforming.

TESTING & CERTIFICATION

We have the equipment and the trained personnel for any conceivable testing or certification in the lighting & industrial equipment industries.

RESIDENTIAL OUTDOOR LIGHTS



SWB100

PAGE NO : 1



SWB200

PAGE NO : 2



OWP100

PAGE NO : 3



OWP200-300

PAGE NO : 4



WSC200

PAGE NO : 5



SWF200

PAGE NO : 6



CT1011

PAGE NO : 7



SWF400

PAGE NO : 8



SWF500

PAGE NO : 9



DTD310-330

PAGE NO : 10-11



FWL110-440

PAGE NO : 12-14



CSM100-200

PAGE NO : 15



DTD460

PAGE NO : 16

COMMERCIAL OUTDOOR LIGHTS



OVL500/OVL520

PAGE NO : 18



FWL200-400

PAGE NO : 19-21



DCL150S

PAGE NO : 22



DCL160S-180S

PAGE NO : 23



DCL150

PAGE NO : 24-25



DCL360

PAGE NO : 26



WLL120/WLL140

PAGE NO : 27



FLL410-430

PAGE NO : 28-29



FLL310-350

PAGE NO : 30-31



CVL603

PAGE NO : 32



CVL403/CVL503

PAGE NO : 33



CVL601/CVL602

PAGE NO : 34



DTD430-450

PAGE NO : 35-36



FSL530-550

PAGE NO : 37-38

PROFESSIONAL OUTDOOR LIGHTS



CLL220/CLL440

PAGE NO : 40



WPL110-150

PAGE NO : 41-42



ARL460-500

PAGE NO : 43-44



FSL620-650

PAGE NO : 45-46



FSL600-650

PAGE NO : 47-48



ARL680

PAGE NO : 49



CHL540-550

PAGE NO : 50



RBL400/SSB600/TRB600

PAGE NO : 51



SRB800

PAGE NO : 52



FLL800-810

PAGE NO : 53-54



FLL450-490

PAGE NO : 55-56



LSPT01

PAGE NO : 57



LSPT02

PAGE NO : 58



LSPT03

PAGE NO : 59-60

SPECIAL OUTDOOR LIGHTS



VPL

PAGE NO : 62-63



DLL320

PAGE NO : 64



CVL700

PAGE NO : 65



CVL800

PAGE NO : 66



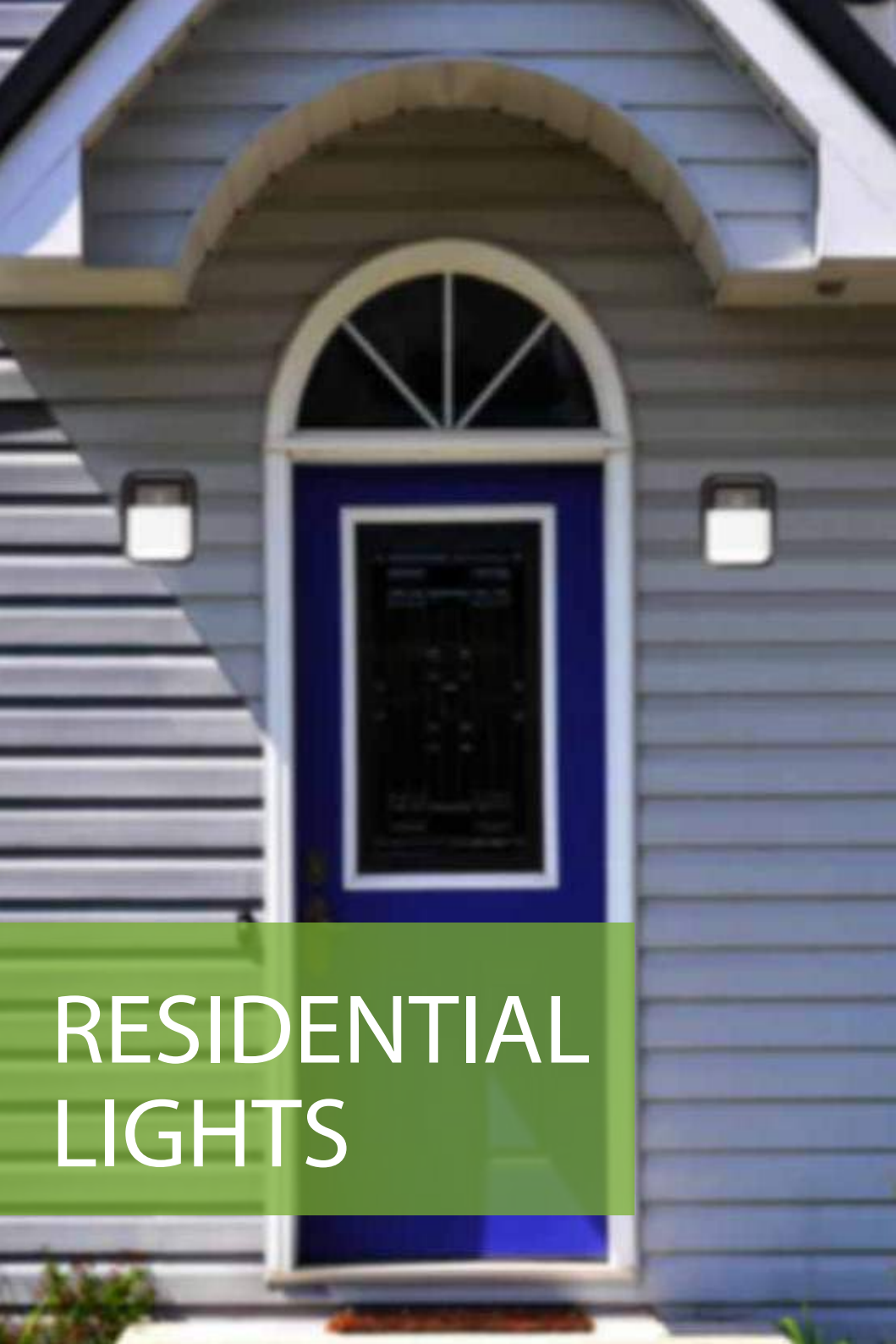
CVL710

PAGE NO : 67



CVL810

PAGE NO : 68



RESIDENTIAL LIGHTS

WALL LIGHT DESCRIPTION

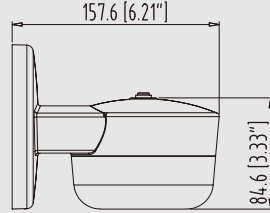
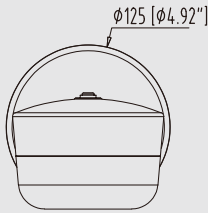


RESIDENTIAL OUTDOOR LIGHT

MODEL: SWB100



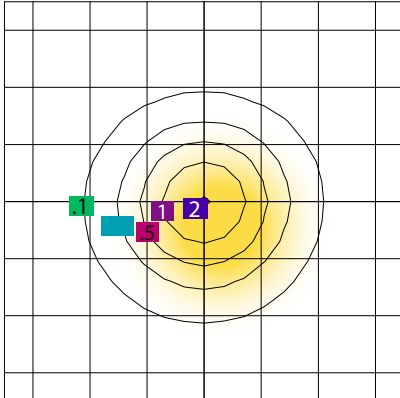
NOMENCLATURE	LUMENS(LM)	EFFICACY(LPW)	INPUT VOLTAGE	CRI	DISTRIBUTION	EQUIVALENCY(W)	OPERATING TEMP	WARRANTY
SWB100-12W	945LM	UP TO 80LPW	120V	>80	N/A	35W MH	-30-40°C	5 YEARS



MODEL	WATTAGE	CCT	VOLTAGE	DIMMING OPTION	OPTIONS	HOUSING FINISH
SWB100	12W	30K = 3000K 40K = 4000K 50K = 5000K	V1 = 120V	N = Non-Dimming	PC = Photocell	BZ = Bronze SL = Silver WH = White GY = Gray BK = Black

ORDERING INFORMATION (SWB100-12W-30K-V1-N-PC-BZ)

PHOTOMETRY SWB100-12W
Mounting Height=10.00 FT



SCALE: 1 INCH = 10 FT.
LIGHT LOSS FACTOR = 1.00
MAXIMUM CALCULATED VALUE = 2.10 FC
FOOT CANDLE= 1 .25 .5 1 2

- Impact & weather resistant fixture with full polycarbonate housings and lenses. Glare free and frosted lens for an inviting and even light distribution
- Universal mounting plate with integral wire hooks for easy hands free installation
- Photocell included with optional photocell cap
- Name brand chip and DOB technology @ 5 year warranty

WALL LIGHT DESCRIPTION

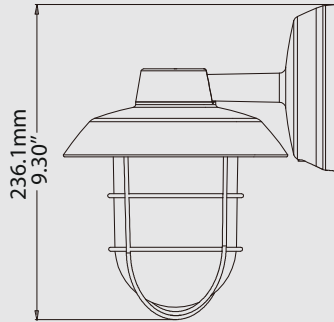
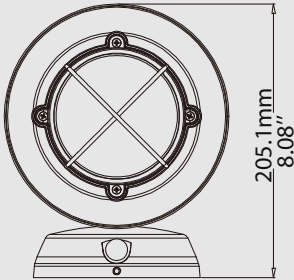


RESIDENTIAL OUTDOOR LIGHT

MODEL: SWB200

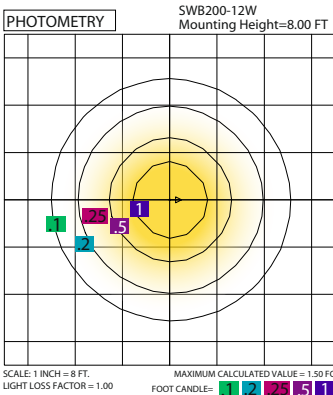


NOMENCLATURE	LUMENS(LM)	EFFICACY(LPW)	INPUT VOLTAGE	CRI	DISTRIBUTION	EQUIVALENCY(W)	OPERATING TEMP	WARRANTY
SWB200-12W	1000LM	UP TO 85LPW	120V	>80	N/A	35W MH	-30-40°C	5 YEARS



MODEL	WATTAGE	CCT	VOLTAGE	DIMMING OPTION	OPTIONS	HOUSING FINISH
SWB200	12W	AD = CCT Adjustable	V1 = 120V	N = Non-Dimming	PC = Photocell	BZ = B bronze SL = Silver WH = White GY = Gray BK = Black

ORDERING INFORMATION (SWB200-12W-AD-V1-N-PC-BZ)



- Impact & weather resistant fixture with pre-cast aluminum housings and lenses. Glare free and frosted lens for an inviting and even light distribution
- Universal mounting plate with integral wire hooks for easy hands free installation. Pivot arm for ceiling mount and wall mount
- Photocell included with optional photocell cover
- 3000K, 4000K, 5000K adjustable
- Name brand chip and DOB technology @ 5 year warranty

WALL PACK DESCRIPTION

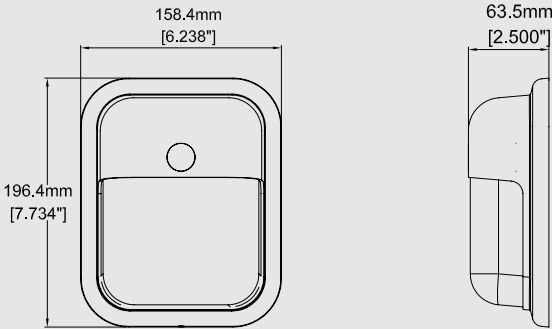


RESIDENTIAL OUTDOOR LIGHT

MODEL: OWP100

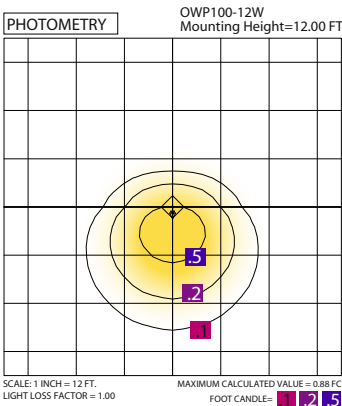


NOMENCLATURE	LUMENS(LM)	EFFICACY(LPW)	INPUT VOLTAGE	CRI	DISTRIBUTION	EQUIVALENCY(W)	OPERATING TEMP	WARRANTY
OWP100-12W	945LM	UP TO 80LPW	120V	>80	N/A	35W MH	-30-40°C	5 YEARS



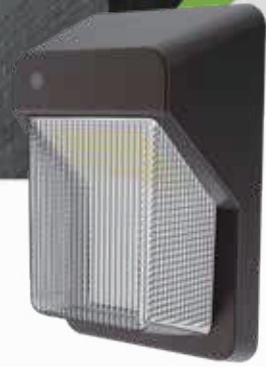
MODEL	WATTAGE	CCT	VOLTAGE	DIMMING OPTION	OPTIONS	HOUSING FINISH
OWP100	12W	30K = 3000K 40K = 4000K 50K = 5000K	V1 = 120V	N = Non-Dimming	PC = Photocell	BZ = B ronze SL = Silver WH = White GY = Gray BK = Black

ORDERING INFORMATION (OWP100-12W-30K-V1-N-PC-BZ)



- Impact & weather resistant fixture with full polycarbonate housings and lenses. Glare free and frosted lens for an inviting and even light distribution
- Universal mounting plate with integral wire hooks for easy hands free installation
- Photocell included with optional photocell cover
- Name brand chip and DOB technology @ 5 year warranty

WALL PACK DESCRIPTION

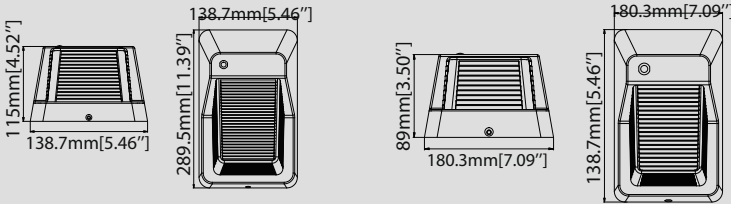


RESIDENTIAL OUTDOOR LIGHT

MODEL: OWP200/OWP300

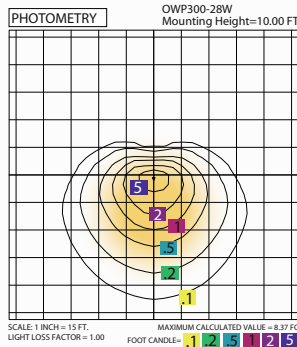
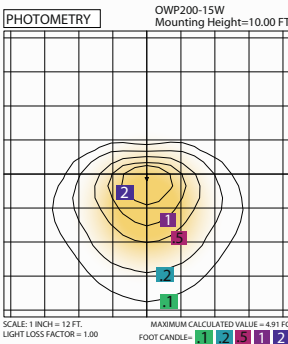


NOMENCLATURE	LUMENS(LM)	EFFICACY(LPW)	INPUT VOLTAGE	CRI	DISTRIBUTION	EQUIVALENCY(W)	OPERATING TEMP	WARRANTY
OWP200-15W	1780LM	UP TO 125LPW	120-277V	>70	N/A	50W MH	-30-40°C	5 YEARS
OWP300-28W	3375LM	UP TO 125LPW	120-277V	>70	N/A	100W MH	-30-40°C	5 YEARS



MODEL	WATTAGE	CCT	VOLTAGE	DIMMING OPTION	OPTIONS	HOUSING FINISH	
OWP200	15W	30K = 3000K	V8 = 120-277V	D = Dimming N = Non-Dimming	PC = Photocell	BZ = Bronze	SL = Silver
OWP300	28W	40K = 4000K				WH = White	GY = Gray
		50K = 5000K				BK = Black	

ORDERING INFORMATION (OWP200-15W-40K-V8-N-PC-BZ)



- Impact & weather resistant fixture with full polycarbonate front housing and plastic housing. Prismatic lens for better glare control
- Universal mounting plate with integral wire hooks for easy hands free installation
- Photocell included with optional photocell cover
- Name brand chip and driver @ 5 year warranty

SECURITY LIGHT DESCRIPTION

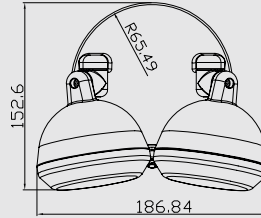
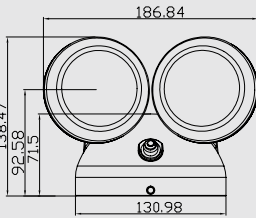


RESIDENTIAL OUTDOOR LIGHT

MODEL: SWF200



NOMENCLATURE	LUMENS(LM)	EFFICACY(LPW)	INPUT VOLTAGE	CRI	DISTRIBUTION	EQUIVALENCY(W)	OPERATING TEMP	WARRANTY
SWF200-12W	1200LM	UP TO 100LPW	120V	>80	N/A	75W MH	-30-40°C	5 YEARS

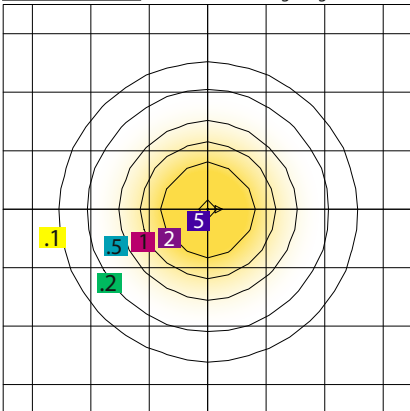


MODEL	WATTAGE	CCT	VOLTAGE	DIMMING OPTION	OPTIONS	HOUSING FINISH
SWF200	12W	30K = 3000K 40K = 4000K 50K = 5000K	V1 = 120V	N = Non-Dimming	PC = Photocell	BZ = Bronze SL = Silver WH = White GY = Gray BK = Black

ORDERING INFORMATION (SWF200-12W-30K-V1-N-PC-BZ)

PHOTOMETRY

SWF200-12W
Mounting Height=8.00 FT



SCALE: 1 INCH = 8 FT.
LIGHT LOSS FACTOR = 1.00
MAXIMUM CALCULATED VALUE = 5.53 FC
FOOT CANDLE = .1 .2 .5 1 2 5

- Impact & weather resistant fixture with full polycarbonate housings and lenses. Glare free and frosted lens for an inviting and even light distribution
- Universal mounting plate with integral wire hooks for easy hands free installation
- Photocell included with optional photocell cover
- Name brand chip and driver @ 5 year warranty

SECURITY LIGHT DESCRIPTION

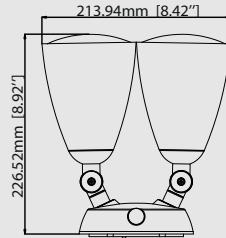
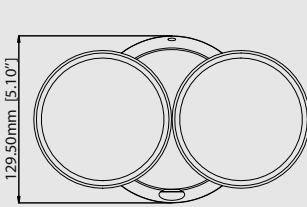


RESIDENTIAL OUTDOOR LIGHT

MODEL: CT1011



NOMENCLATURE	LUMENS(LM)	EFFICACY(LPW)	INPUT VOLTAGE	CRI	DISTRIBUTION	EQUIVALENCY(W)	OPERATING TEMP	WARRANTY
CT1011-20W	1700LM	UP TO 85LPW	120V	>70	N/A	75W MH	-30-40°C	2 YEARS

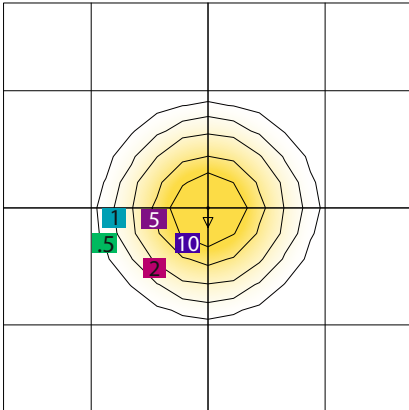


MODEL	WATTAGE	CCT	VOLTAGE	DIMMING OPTION	OPTIONS	HOUSING FINISH
CT1011	20W	30K = 3000K 40K = 4000K 50K = 5000K	V1 = 120V	N = Non-Dimming	PC = Photocell	BZ = Bronze SL = Silver WH = White GY = Gray BK = Black

ORDERING INFORMATION (CT1011-20W-40K-V1-N-PC-BZ)

PHOTOMETRY

CT1011-20W
Mounting Height=12.00 FT



SCALE: 1 INCH = 6 FT.
LIGHT LOSS FACTOR = 1.00

MAXIMUM CALCULATED VALUE = 18.58 FC
FOOT CANDLE= 5 1 2 5 10

- Impact & weather resistant fixture with full polycarbonate housings
- PAR30 bulb with glare free lens @ 2 year warranty
- Universal mounting plate with integral wire hooks for easy hands free installation
- Photocell included with optional photocell cover

SECURITY LIGHT DESCRIPTION

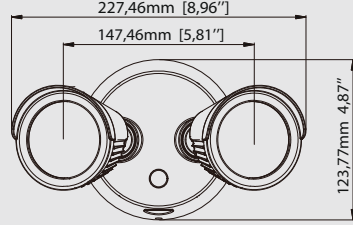
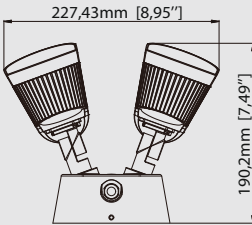


RESIDENTIAL OUTDOOR LIGHT

MODEL: SWF400

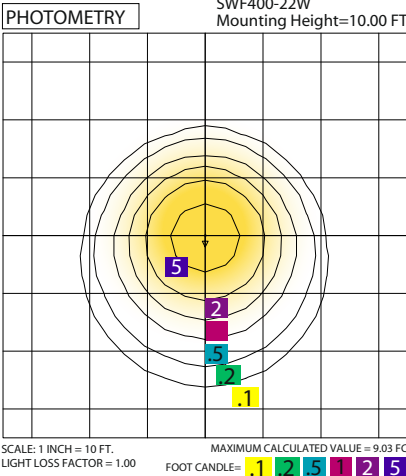


NOMENCLATURE	LUMENS(LM)	EFFICACY(LPW)	INPUT VOLTAGE	CRI	DISTRIBUTION	EQUIVALENCY(W)	OPERATING TEMP	WARRANTY
SWF400-22W	2250LM	UP TO 105LPW	120V	>70	N/A	75W MH	-30-40°C	5 YEARS



MODEL	WATTAGE	CCT	VOLTAGE	DIMMING OPTION	OPTIONS	HOUSING FINISH
SWF400	22W	AD = CCT Adjustable	V1 = 120V	N = Non-Dimming	PC = Photocell NA = None	BZ = Bronze SL = Silver WH = White GY = Gray BK = Black

ORDERING INFORMATION (SWF400-22W-AD-V1-N-PC-BZ)



- Impact & weather resistant fixture with die cast housings and glass lenses. Prismatic lenses for better glare control
- Universal mounting plate with integral wire hooks for easy hands free installation
- Photocell included with optional photocell cover
- Remote control for easy CCT adjustable (2700K,3000K,3500K,4000K,5000K)
- Name brand chip and driver @ 5 year warranty

SECURITY LIGHT DESCRIPTION

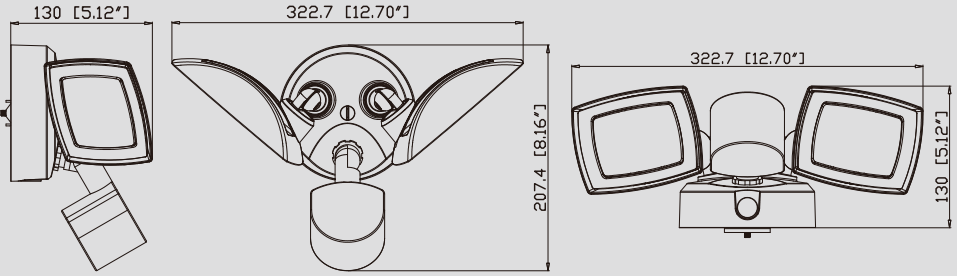


RESIDENTIAL OUTDOOR LIGHT

MODEL: SWF500

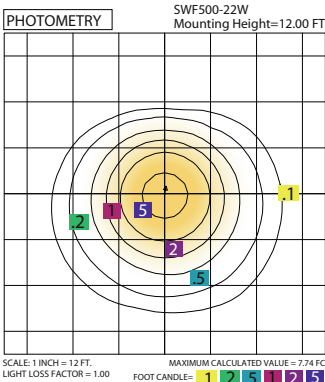


NOMENCLATURE	LUMENS(LM)	EFFICACY(LPW)	INPUT VOLTAGE	CRI	DISTRIBUTION	EQUIVALENCY(W)	OPERATING TEMP	WARRANTY
SWF500-22W	3000LM	UP TO 136LPW	120V	>70	N/A	75W MH	-30-40°C	5 YEARS



MODEL	WATTAGE	CCT	VOLTAGE	DIMMING OPTION	OPTIONS	HOUSING FINISH
SWF500	22W	30K = 3000K 40K = 4000K 50K = 5000K	V1 = 120V	N = Non-Dimming	PC = Photocell MS = Motion Sensor NA = None	BZ = B ronze SL = Silver WH = White GY = Gray BK = Black

ORDERING INFORMATION (SWF500-22W-40k-V1-N-PC-BZ)



- Impact & weather resistant fixture with die cast housings and clear polycarbonate lenses.
- Universal mounting plate with integral wire hooks for easy hands free installation.
- External motion sensor included with 180° 50ft detection.
- Individual photocell is optional
- Name brand chip and driver@5 year warranty

DUSK TO DAWN DESCRIPTION

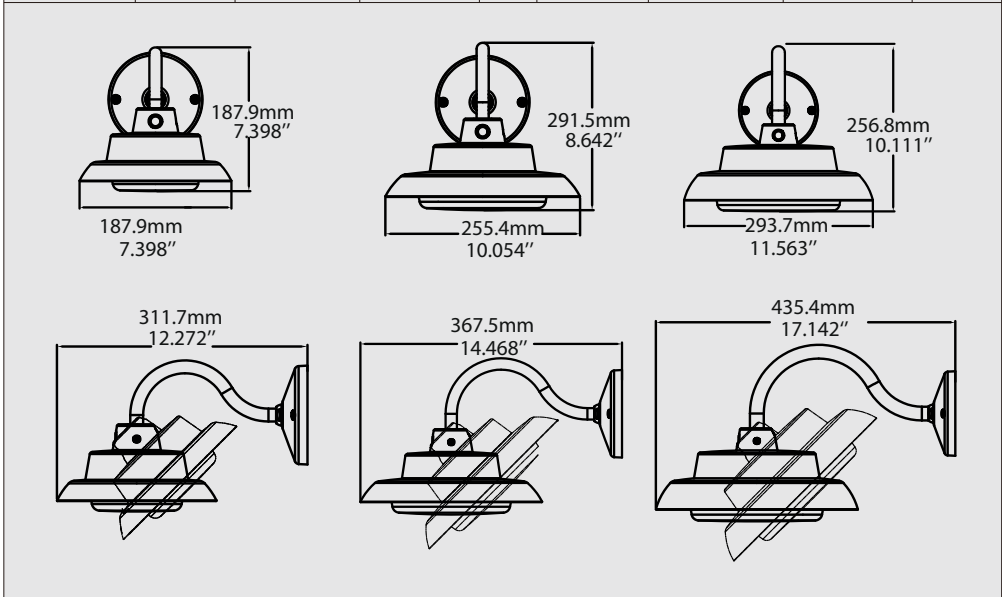


RESIDENTIAL OUTDOOR LIGHT

MODEL: DTD310/DTD320/DTD330



NOMENCLATURE	LUMENS(LM)	EFFICACY(LPW)	INPUT VOLTAGE	CRI	DISTRIBUTION	EQUIVALENCY(W)	OPERATING TEMP	WARRANTY
DTD310-35W	3100LM	UP TO 89LPW	120V	>70	N/A	125W MH	-30-40°C	5 YEARS
DTD320-50W	5000LM	UP TO 100LPW	120V	>70	N/A	150W MH	-30-40°C	5 YEARS
DTD330-80W	8000LM	UP TO 100LPW	120V	>70	N/A	250W MH	-30-40°C	5 YEARS



- Impact & weather resistant fixture with die cast housings and glare free polycarbonate lenses
- Universal mounting plate with integral wire hooks for easy hands free wall mount installation. A tenon mount accessory as optional
- Pivot head for multiple application
- Photocell included with optional photocell cover
- Name brand chip and DOB technology @ 5 year warranty

DUSK TO DAWN DESCRIPTION



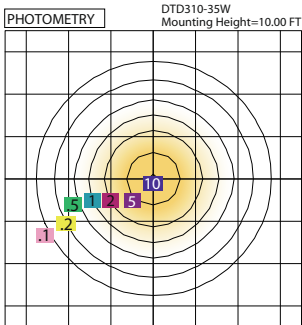
RESIDENTIAL OUTDOOR LIGHT

MODEL: DTD310/DTD320/DTD330

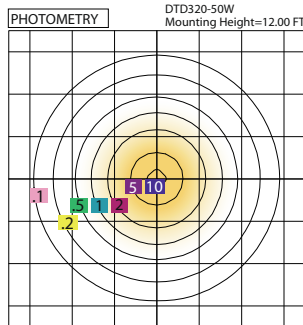


MODEL	WATTAGE	CCT	VOLTAGE	DIMMING OPTION	OPTIONS	HOUSING FINISH	
DTD310	35W	30K = 3000K	V1 = 120V	N = Non-Dimming	PC = Photocell NA = None	BZ = B ronze	SL = Silver
DTD320	50W	40K = 4000K				WH = White	GY = Gray
DTD330	80W	50K = 5000K				BK = Black	
MOUNTING							
TM = Tenon Mount WM = Wall Mount							

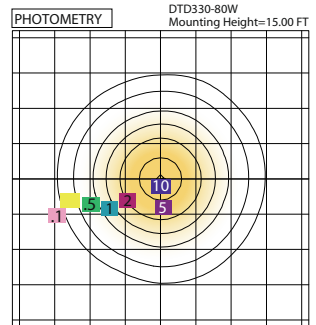
ORDERING INFORMATION (DTD310-35W-40K-V1-N-PC-BZ-TM)



SCALE: 1 INCH = 10 FT. MAXIMUM CALCULATED VALUE = 10.92 FC
 LIGHT LOSS FACTOR = 1.00 FOOT CANDLE = 1 2 5 10 15 20 25 30 35



SCALE: 1 INCH = 12 FT. MAXIMUM CALCULATED VALUE = 11.69 FC
 LIGHT LOSS FACTOR = 1.00 FOOT CANDLE = 1 2 5 10 15 20 25 30 35 40 45 50



SCALE: 1 INCH = 18 FT. MAXIMUM CALCULATED VALUE = 10.60 FC
 LIGHT LOSS FACTOR = 1.00 FOOT CANDLE = 1 2 5 10 15 20 25 30 35 40 45 50 55 60 65 70 75 80

WALL LIGHT DESCRIPTION

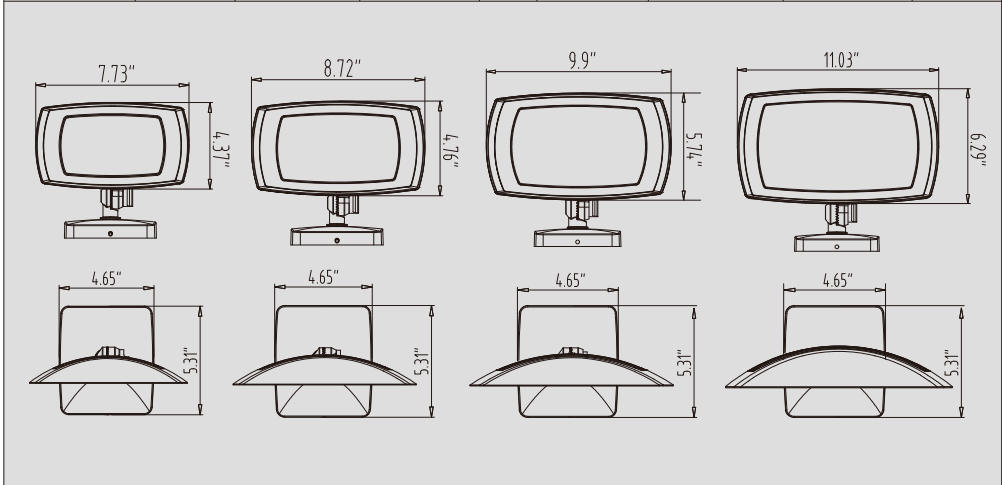


RESIDENTIAL OUTDOOR LIGHT

MODEL: FWL110/FWL220/FWL330/FWL440



NOMENCLATURE	LUMENS(LM)	EFFICACY(LPW)	INPUT VOLTAGE	CRI	DISTRIBUTION	EQUIVALENCY(W)	OPERATING TEMP	WARRANTY
FWL110-15W	1700LM	UP TO 118LPW	120V	>70	N/A	70W MH	-30-40°C	5 YEARS
FWL110-15W-CCT	1700LM	UP TO 118LPW	120V	>70	N/A	70W MH	-30-40°C	5 YEARS
FWL220-28W	3200LM	UP TO 118LPW	120V	>70	N/A	100W MH	-30-40°C	5 YEARS
FWL220-28W-CCT	3200LM	UP TO 118LPW	120V	>70	N/A	100W MH	-30-40°C	5 YEARS
FWL330-45W	5200LM	UP TO 118LPW	120V	>70	N/A	175W MH	-30-40°C	5 YEARS
FWL440-75W	8400LM	UP TO 118LPW	120V	>70	N/A	250W MH	-30-40°C	5 YEARS



- Wallpack and Floodlight combo. Adjustable wall mount and knuckle are quickly field-installable allowing the fixture to be seamlessly a wallpack and floodlight
- Universal mounting plate with integral wire hooks for easy hands free wall mount installation.
- Impact & weather resistant fixture with die cast housings and clear polycarbonate lenses.
- Photocell included with optional photocell cover
- 2700K, 3000K, 3500K, 4000K, 5000K, CCT adjustable by remote @ 15W/28W
- Name brand chip and DOB technology @ 5 year warranty

FLOOD LIGHT DESCRIPTION

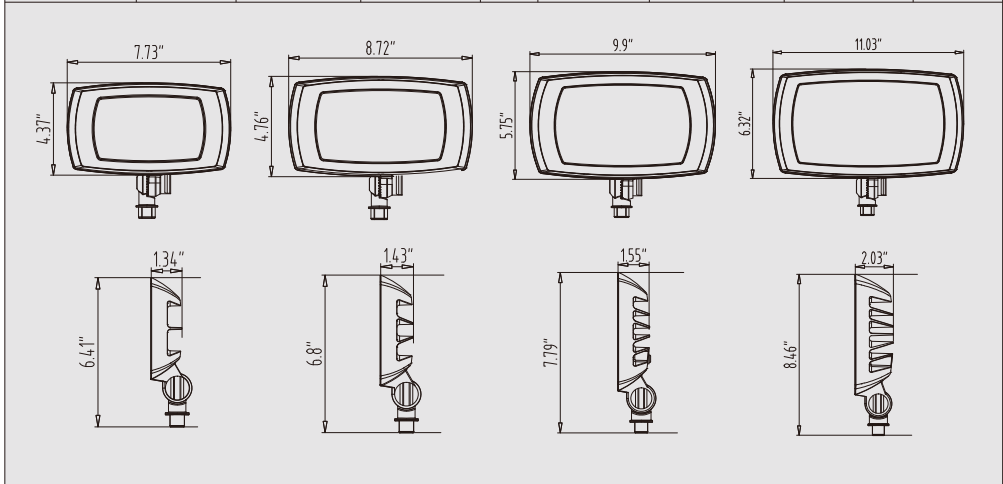


RESIDENTIAL OUTDOOR LIGHT

MODEL: FWL110/FWL220/FWL330/FWL440



NOMENCLATURE	LUMENS(LM)	EFFICACY(LPW)	INPUT VOLTAGE	CRI	DISTRIBUTION	EQUIVALENCY(W)	OPERATING TEMP	WARRANTY
FWL110-15W	1700LM	UP TO 118LPW	120V	>70	N/A	70W MH	-30-40 C	5 YEARS
FWL110-15W-CCT	1700LM	UP TO 118LPW	120V	>70	N/A	70W MH	-30-40°C	5 YEARS
FWL220-28W	3200LM	UP TO 118LPW	120V	>70	N/A	100W MH	-30-40 C	5 YEARS
FWL220-28W-CCT	3200LM	UP TO 118LPW	120V	>70	N/A	100W MH	-30-40°C	5 YEARS
FWL330-45W	5200LM	UP TO 118LPW	120V	>70	N/A	175W MH	-30-40 C	5 YEARS
FWL440-75W	8400LM	UP TO 118LPW	120V	>70	N/A	250W MH	-30-40 C	5 YEARS



Wallpack and Floodlight combo. Adjustable wall mount and knuckle are quickly field-installable allowing the fixture to be seamlessly a wallpack and floodlight

Universal mounting plate with integral wire hooks for easy hands free wall mount installation.

Impact & weather resistant fixture with die cast housings and clear polycarbonate lenses.

Photocell included with optional photocell cover

2700K, 3000K, 3500K, 4000K, 5000K, CCT adjustable by remote @ 15W/28W

Name brand chip and DOB technology @ 5 year warranty

WALL/FLOOD DESCRIPTION



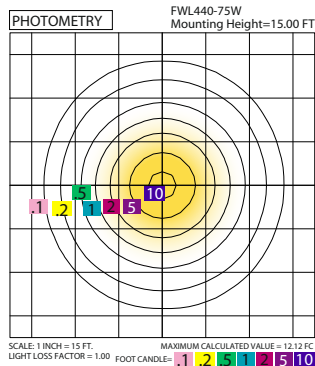
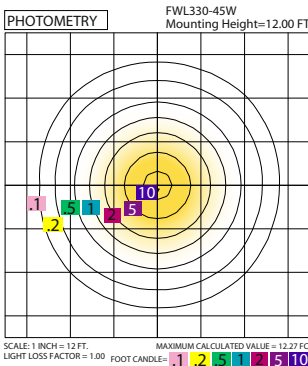
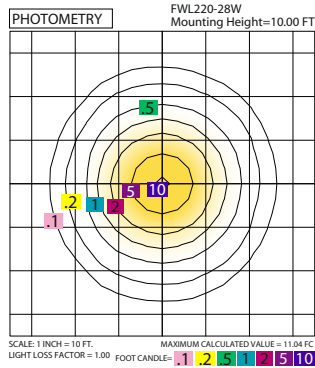
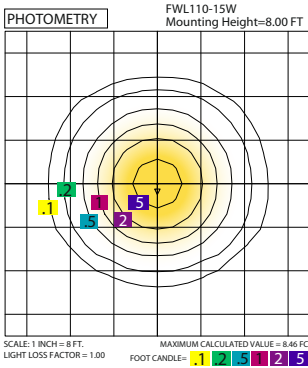
RESIDENTIAL OUTDOOR LIGHT

MODEL: FWL110/FWL220/FWL330/FWL440



MODEL	WATTAGE	CCT	VOLTAGE	OPTIONS	DIMMING OPTION	HOUSING FINISH	MOUNTING	
FWL110	15W	30K,40K,50K	V1 = 120V	PC = Photocell	N = Non-Dimming	BZ = Bronze	SL = Silver	WM = Wall Mount KN = Knuckle
FWL220	28W	AD=CCTAdjustable		NA = None		WH = White	GY = Gray	
FWL330	45W	30K,40K,50K						
FWL440	75W	30K = 3000K 40K = 4000K 50K = 5000K					BK = Black	

ORDERING INFORMATION (FWL110-15W-AD-V1-NA-N-BZ-WM)



CEILING LIGHT DESCRIPTION



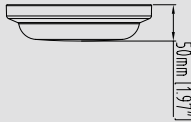
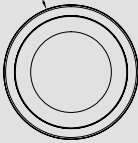
RESIDENTIAL OUTDOOR LIGHT

MODEL: CSM100/CSM200

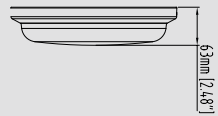
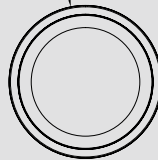


NOMENCLATURE	LUMENS(LM)	EFFICACY(LPW)	INPUT VOLTAGE	CRI	DISTRIBUTION	EQUIVALENCY(W)	OPERATING TEMP	WARRANTY
CMS100-12W	850LM	UP TO 75LPW	120V	>80	N/A	35W MH	-30-40°C	5 YEARS
CMS200-20W	1600LM	UP TO 80LPW	120V	>80	N/A	50W MH	-30-40°C	5 YEARS

Ø200mm [Ø7.87"]



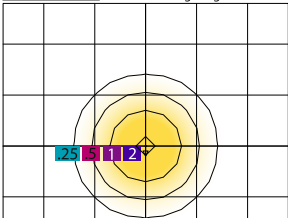
Ø275mm [Ø10.83"]



MODEL	WATTAGE	CCT	VOLTAGE	DIMMING OPTION	HOUSING FINISH
CSM 100	12W	30K = 3000K	V1 = 120V	N = Non-Dimming	BZ = Bronze SL = Silver
CSM 200	20W	40K = 4000K 50K = 5000K			WH = White GY = Gray BK = Black

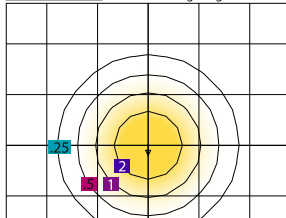
ORDERING INFORMATION (CSM100-12W-30K-V1-N-BZ)

PHOTOMETRY CSM100-12W Mounting Height=10.00 FT



SCALE: 1 INCH = 8 FT. LIGHT LOSS FACTOR = 1.00. MAXIMUM CALCULATED VALUE = 2.35 FC. FOOT CANDLE = 2.5 1 1 2

PHOTOMETRY CSM200-20W Mounting Height=10.00 FT



SCALE: 1 INCH = 8 FT. LIGHT LOSS FACTOR = 1.00. MAXIMUM CALCULATED VALUE = 4.14 FC. FOOT CANDLE = 2.5 1 1 2

- Impact & weather resistant fixture with die cast back housing and polycarbonate lenses. Glare free and frosted lens for an inviting and even light distribution
- Universal mounting plate with integral wire hooks for easy hands free installation
- Name brand chip and DOB technology @ 5 year warranty

DUSK TO DAWN DESCRIPTION

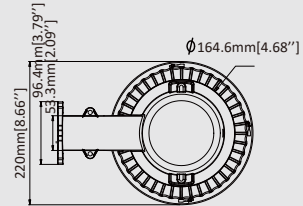
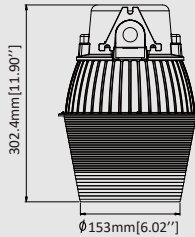
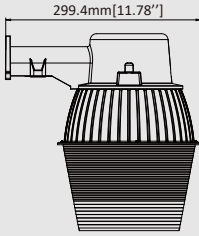


RESIDENTIAL OUTDOOR LIGHT

MODEL: DTD460



NOMENCLATURE	LUMENS(LM)	EFFICACY(LPW)	INPUT VOLTAGE	CRI	DISTRIBUTION	EQUIVALENCY(W)	OPERATING TEMP	WARRANTY
DTD460-30W	3400LM	UP TO 113LPW	120V	>70	N/A	150W MH	-30-40°C	2 YEARS

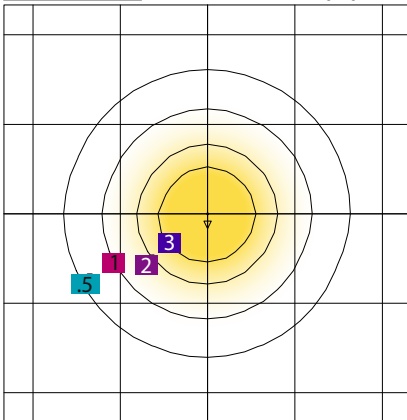


MODEL	WATTAGE	CCT	VOLTAGE	DIMMING OPTION	OPTIONS	HOUSING FINISH
DTD460	30W	40K = 4000K	V1 = 120V	N = Non-Dimming	PC = Photocell NA = None	BZ = Bronze SL = Silver WH = White GY = Gray BK = Black

ORDERING INFORMATION (DTD460-30W-40K-V1-N-PC-BZ)

PHOTOMETRY

DTD460-30W
Mounting Height=12.00 FT



SCALE: 1 INCH = 8 FT.
LIGHT LOSS FACTOR = 1.00

MAXIMUM CALCULATED VALUE = 4.51 FC
FOOT CANDLE= .5 1 2 3

- impact & weather resistant fixture with polycarbonate and metal housing. Prismatic drop lens for glare free
- universal mounting design available for wall mount and tennon mount
- PAR38 bulb with glare free lens @ 2 year warranty
- Photocell included with optional photocell cover



COMMERCIAL LIGHTS

WALL PACK DESCRIPTION



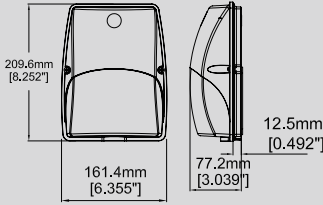
COMMERCIAL OUTDOOR LIGHT

MODEL: OVL500/OVL520

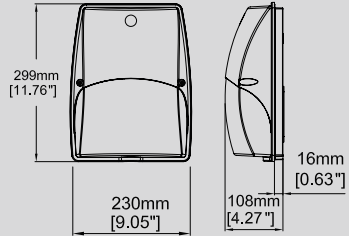


NOMENCLATURE	LUMENS(LM)	EFFICACY(LPW)	INPUT VOLTAGE	CRI	DISTRIBUTION	EQUIVALENCY(W)	OPERATING TEMP	WARRANTY
OVL500-15W	1788LM	UP TO 115LPW	120-277V	>70	Forward Throw	35W MH	-30-40°C	5 YEARS
OVL500-20W	2113LM	UP TO 115LPW	120-277V	>70	Forward Throw	50W MH	-30-40°C	5 YEARS
OVL520-30W	3463LM	UP TO 115LPW	120-277V	>70	Forward Throw	70W MH	-30-40°C	5 YEARS

OVL500 - 10W/15W/20W



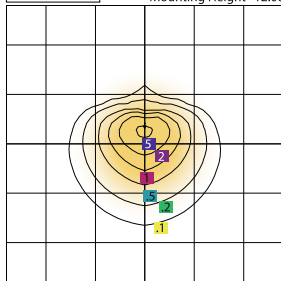
OVL520 - 30W



MODEL	WATTAGE	CCT	VOLTAGE	DIMMING OPTION	OPTIONS	SURGE PROTECTOR	HOUSING FINISH
OVL 500	15W 20W	30K = 3000K 40K = 4000K 50K = 5000K	V8 = 120-277V	D = Dimming N = Non-Dimming	PC = Photocell NA = None	NA = None S1 = Surge Protector	BZ = Bronze SL = Silver WH = White GY = Gray BK = Black
OVL 520	30W						

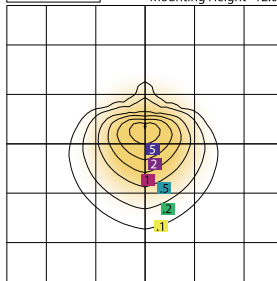
ORDERING INFORMATION (OVL500-15W-40K-V8-D-PC-S1-BZ)

PHOTOMETRY OVL500-20W Mounting Height=12.00 FT



SCALE: 1 INCH = 15 FT. LIGHT LOSS FACTOR = 1.00
MAXIMUM CALCULATED VALUE = 5.54 FC
FOOT CANDLES: 1, 2, 5, 10, 15, 20, 25

PHOTOMETRY OVL520-30W Mounting Height=12.00 FT



SCALE: 1 INCH = 18 FT. LIGHT LOSS FACTOR = 1.00
MAXIMUM CALCULATED VALUE = 9.39 FC
FOOT CANDLES: 1, 2, 5, 10, 15, 20, 25

- Impact & weather resistant fixture with die cast back housing and polycarbonate lenses. Glare free and frosted lens for an inviting and even light distribution
- Photocell and photocell cover are optional
- Name brand chip and high quality driver @ 5 year

ADDITIONAL PHOTOMETRICS AVAILABLE ONLINE

WALL PACK DESCRIPTION

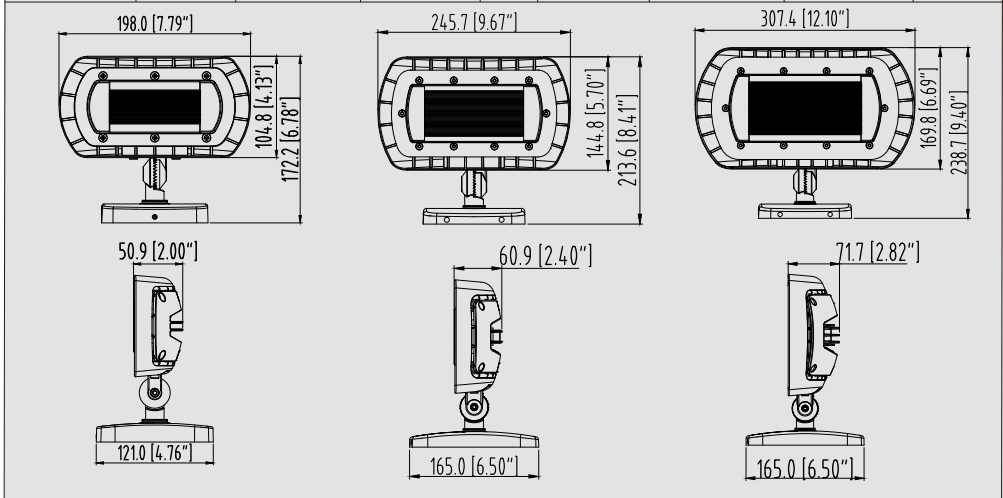


COMMERCIAL OUTDOOR LIGHT

MODEL: FWL200/FWL300/FWL400



NOMENCLATURE	LUMENS(LM)	EFFICACY(LPW)	INPUT VOLTAGE	CRI	DISTRIBUTION	EQUIVALENCY(W)	OPERATING TEMP	WARRANTY
FWL200-15W	1800LM	UP TO 125LPW	120-277V 347/480V	>70	N/A	100 W MH	-30-40°C	5 YEARS
FWL200-28W	3600LM	UP TO 125LPW	120-277V 347/480V	>70	N/A	100W MH	-30-40°C	5 YEARS
FWL300-50W	6450LM	UP TO 125LPW	120-277V 347/480V	>70	N/A	175W MH	-30-40°C	5 YEARS
FWL400-76W	9570LM	UP TO 125LPW	120-277V 347/480V	>70	N/A	250W MH	-30-40°C	5 YEARS



- Wallpack and Floodlight combo. Adjustable wall mount and knuckle are quickly field-installable allowing the fixture to be seamlessly a wallpack and floodlight
- Universal mounting plate with integral wire hooks for easy hands free wall mount installation.
- Impact & weather resistant fixture with die cast housings and clear polycarbonate lenses.
- Photocell included with optional photocell cover
- Lumieds chip and name brand driver @ 5 year warranty

FLOOD DESCRIPTION

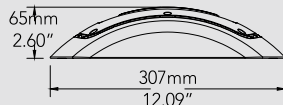
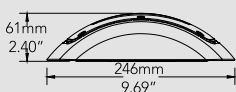
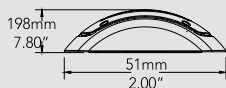
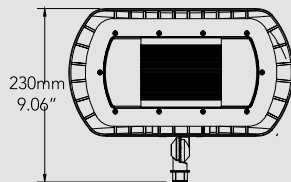
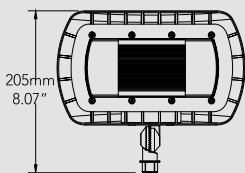
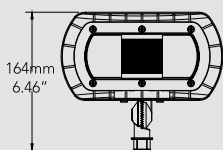


COMMERCIAL OUTDOOR LIGHT

MODEL: FWL200/FWL300/FWL400



NOMENCLATURE	LUMENS(LM)	EFFICACY(LPW)	INPUT VOLTAGE	CRI	DISTRIBUTION	EQUIVALENCY(W)	OPERATING TEMP	WARRANTY
FWL200-15W	1800LM	UP TO 125LPW	120-277V	>70	N/A	100 W MH	-30-40°C	5 YEARS
FWL200-28W	3600LM	UP TO 125LPW	120-277V	>70	N/A	100W MH	-30-40°C	5 YEARS
FWL300-50W	6450LM	UP TO 125LPW	120-277V	>70	N/A	175W MH	-30-40°C	5 YEARS
FWL400-76W	9570LM	UP TO 125LPW	120-277V	>70	N/A	250W MH	-30-40°C	5 YEARS



- Wallpack and Floodlight combo. Adjustable wall mount and knuckle are quickly field-installable allowing the fixture to be seamlessly a wallpack and floodlight
- Universal mounting plate with integral wire hooks for easy hands free wall mount installation.
- Impact & weather resistant fixture with die cast housings and clear polycarbonate lenses.
- Photocell included with optional photocell cover
- Lumileds chip and name brand driver @ 5 year warranty

WALL/FLOOD DESCRIPTION



COMMERCIAL OUTDOOR LIGHT

MODEL: FWL200/FWL300/FWL400

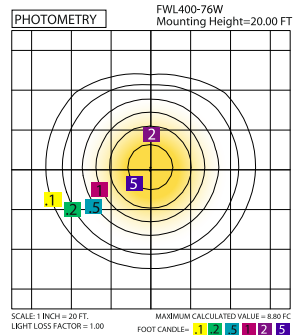
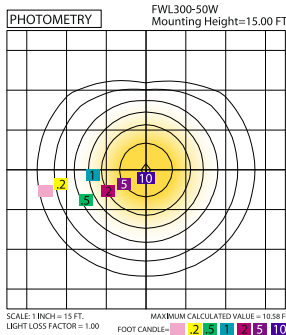
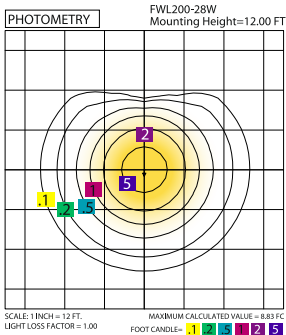


MODEL	NOMENCLATURE	CCT	VOLTAGE	OPTIONS	DIMMING OPTION	HOUSING FINISH
FWL200	15W	30K = 3000K 40K = 4000K 50K = 5000K	V8=120-277V	PC = Photocell	D = Dimming	BZ = B ronze SL = Silver
FWL200	28W		V7=347/480V	NA = None	N = Non-Dimming	WH = White GY = Gray
FWL300	50W					BK = Black
FWL400	76W					

MOUNTING

- WM = Wall Mount
- KN = Knuckle
- TR = Trunnion

ORDERING INFORMATION (FWL200-15W-40K-V8-PC-D-BZ-WM)



ADDITIONAL PHOTOMETRICS AVAILABLE ONLINE

MOUNTINGS/ACCESSORIES

Wall Mount : FWL-WM / Knuckle Mount : FWL-KN / Trunnion : FWL-TR



KNUCKLE MOUNT



TRUNNION MOUNT



WALL MOUNT

WALL PACK DESCRIPTION

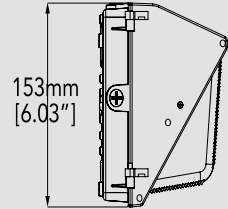
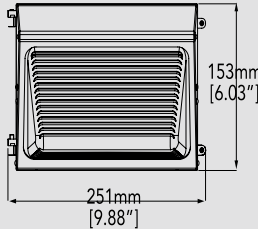
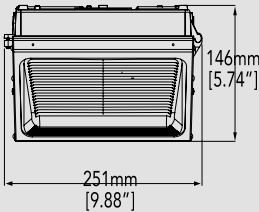


COMMERCIAL OUTDOOR LIGHT

MODEL: DCL150S

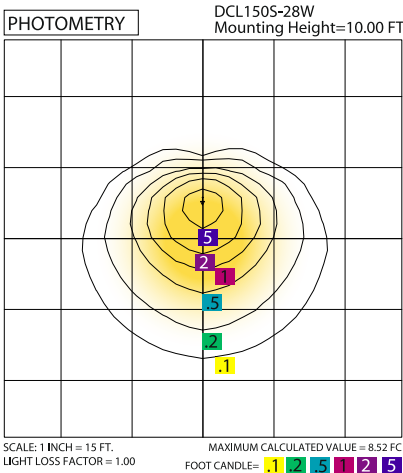


NOMENCLATURE	LUMENS(LM)	EFFICACY(LP/W)	INPUT VOLTAGE	CRI	DISTRIBUTION	EQUIVALENCY(W)	OPERATING TEMP	WARRANTY
DCL150S-28W	3180LM	UP TO 115LP/W	120-277V	>70	N/A	125W MH	-30-40°C	5 YEARS



MODEL	WATTAGE	CCT	VOLTAGE	DIMMING OPTION	ELECTRICAL (PHOTOCELL)	SURGE PROTECTOR	HOUSING FINISH
DCL150S	28W	30K = 3000K 40K = 4000K 50K = 5000K	V8 = 120-277V	D = Dimming N = Non-Dimming	PC = Photocell NA = None	NA = None S1 = Surge Protector	BZ = B ronze SL = Silver WH = White GY = Gray BK = Black

ORDERING INFORMATION (DCL150S-28W-40k-V8-N-NA-NA-BZ)



- Traditional Impact & weather resistant fixture with die cast housings and glare free prismatic polycarbonate lenses
- Universal mounting plate with integral wire hooks for easy hands free installation.
- 0-10V dimming as an option
- Photocell and photocell cover are optional.
- Lumileds chip and name brand driver @ 5 year warranty

WALL PACK DESCRIPTION

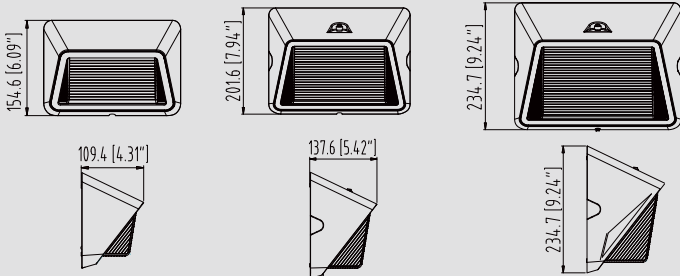


COMMERCIAL OUTDOOR LIGHT

MODEL: DCL160S/DCL170S/DCL180S

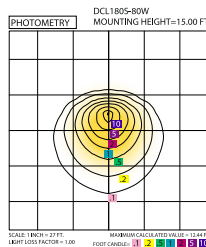
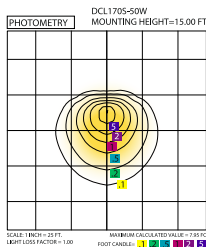
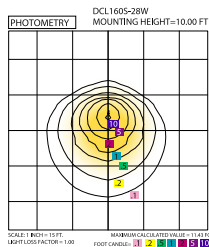


NOMENCLATURE	LUMENS(LM)	EFFICACY(LPW)	INPUT VOLTAGE	CRI	DISTRIBUTION	EQUIVALENCY(W)	OPERATING TEMP	WARRANTY
DCL160S-28W	3380LM	UP TO 125LPW	120-277V	>70	N/A	125W MH	-30-40°C	5 YEARS
DCL170S-50W	6390LM	UP TO 125LPW	120-277V	>70	N/A	175W MH	-30-40°C	5 YEARS
DCL180S-80W	10340LM	UP TO 133LPW	120-277V	>70	N/A	250W MH	-30-40°C	5 YEARS



MODEL	WATTAGE	CCT	VOLTAGE	DIMMING OPTION	OPTIONS	HOUSING FINISH
DCL160S	28W	30K = 3000K	V8 =120-277V	D = Dimming	PC = Photocell	BZ = Bronze SL = Silver
DCL170S	50W	40K = 4000K		N = Non-Dimming	NA = None	WH = White GY = Gray
DCL180S	80W	50K = 5000K				BK = Black

ORDERING INFORMATION (DCL180S-80W-40K-V8-D-PC-BZ)



- Industrial grade Impact & weather resistant fixture with die cast housings and glare free prismatic polycarbonate lenses
- Universal mounting plate with integral wire hooks for easy hands free installation
- 0-10V dimming @ DLC 5.1 Standard
- Photocell and photocell cover are optional (DCL170S & DCL180S)
- name brand chip and driver @ 5 year warranty

WALL PACK DESCRIPTION

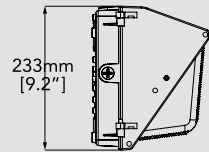
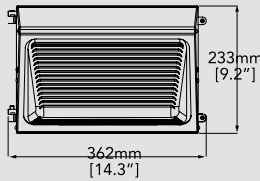
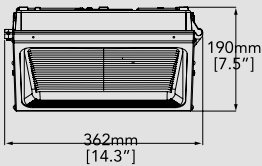


COMMERCIAL OUTDOOR LIGHT

MODEL: DCL150

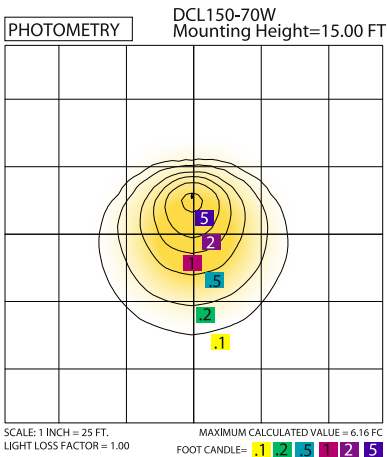


NOMENCLATURE	LUMENS(LM)	EFFICACY(LPW)	INPUT VOLTAGE	CRI	DISTRIBUTION	EQUIVALENCY(W)	OPERATING TEMP	WARRANTY
DCL150-50W	6500LM	UP TO 130LPW	120-277V	>70	N/A	250W MH	-30-40°C	5 YEARS
DCL150-80W	10000LM	UP TO 130LPW	120-277V	>70	N/A	400W M H	-30-40°C	5 YEARS



MODEL	WATTAGE	CCT	VOLTAGE	DIMMING OPTION	ELECTRICAL (PHOTOCELL)	SURGE PROTECTOR	HOUSING FINISH
DCL150	50W 70W	30K = 3000K 40K = 4000K 50K = 5000K	V8 = 120-277V	D= Dimming N=Non-Dimming	PC = Photocell NA = None	NA= None S1 = Surge Protector	BZ = Bronze SL = Silver WH = White GY = Gray BK = Black

ORDERING INFORMATION (DCL150-50W-40k-V8-D-PC-S1-BZ)



- Traditional Impact & weather resistant fixture with die cast aluminum housings and glare free prismatic glass lenses.
- Universal mounting plate with hinge hooks for easy hands free installation.
- Brand name chip and driver @ 5 year warranty.
- Photocell and photocell cover.

WALL PACK

CCT/Wattage Adjustable

DESCRIPTION

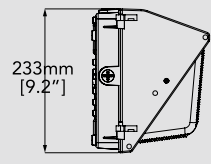
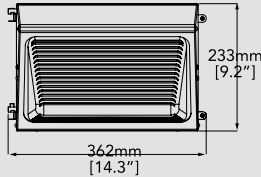
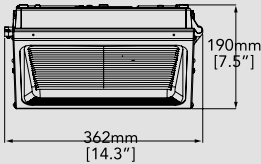


COMMERCIAL OUTDOOR LIGHT

MODEL: DCL150

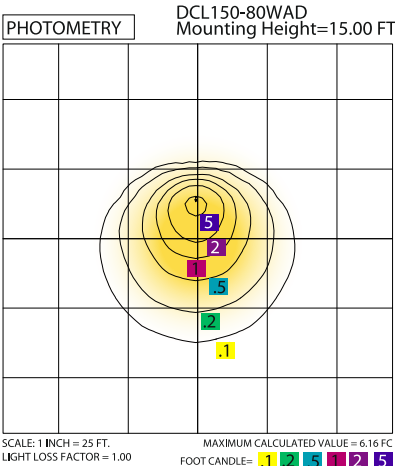


NOMENCLATURE	LUMENS(LM)	EFFICACY(LPW)	INPUT VOLTAGE	CRI	DISTRIBUTION	EQUIVALENCY(W)	OPERATING TEMP	WARRANTY
DCL150-80W adjustable	10000LM	UP TO 130LPW	120-277V	>70	N/A	250W MH	-30-40°C	5 YEARS



MODEL	WATTAGE	CCT	VOLTAGE	DIMMING OPTION	ELECTRICAL (PHOTOCELL)	SURGE PROTECTOR	HOUSING FINISH
DCL150	80WAD	AD=CCT Adjustable	V8 = 120-277V	D = Dimming N = Non-Dimming	PC = Photocell NA = None	NA = None S1 = Surge Protector	BZ = B ronze SL = Silver WH = White GY = Gray BK = Black

ORDERING INFORMATION (DCL150-80WAD-AD-V8-D-PC-S1-BZ)



- Traditional Impact & weather resistant fixture with die cast aluminum housings and glare free prismatic glass lenses.
- Universal mounting plate with hinge hooks for easy hands free installation.
- 20W/40W/60W/80W field adjustable
- 3000K/4000K/5000K field adjustable
- 0-10V dimming @ 5.1 DLC standard.
- Photocell and photocell cover are optional.
- Brand name chip and driver @ 5 year warranty.

WALL PACK DESCRIPTION

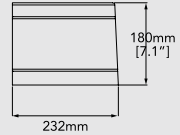
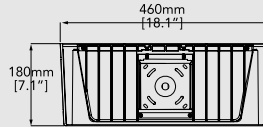
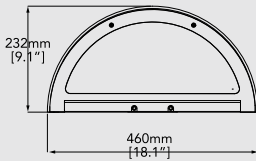


COMMERCIAL OUTDOOR LIGHT

MODEL: DCL360

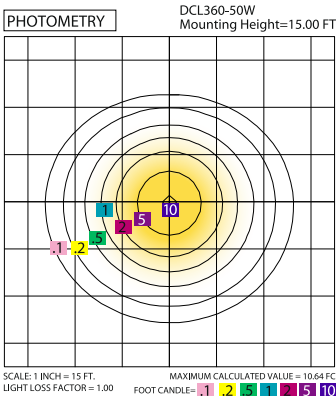


NOMENCLATURE	LUMENS(LM)	EFFICACY(LPW)	INPUT VOLTAGE	CRI	DISTRIBUTION	EQUIVALENCY(W)	OPERATING TEMP	WARRANTY
DCL360-50W	6170LM	UP TO 123LPW	120-277V	>70	N/Forward Throw Full Cut-Off	150W MH	-30-40°C	5 YEARS



MODEL	WATTAGE	CCT	VOLTAGE	DIMMING OPTION	ELECTRICAL (PHOTOCELL)	SURGE PROTECTOR	HOUSING FINISH
DCL360	50W	30K = 3000K 40K = 4000K 50K = 5000K	V8 = 120-277V	D = Dimming N = Non-Dimming	PC = Photocell NA = None	S1 = Surge Protector NA = None	BZ = Bronze SL = Silver WH = White GY = Gray BK = Black

ORDERING INFORMATION (DCL360-50W-40K-V8-N-PC-S1-BZ)



- Traditional Impact & weather resistant fixture with die cast housings and glare free glass lenses
- Universal mounting plate with easy wall mount installation
- 0-10V dimming as an option
- Name brand chip and high quality driver @ 5 year

WALL LIGHT DESCRIPTION

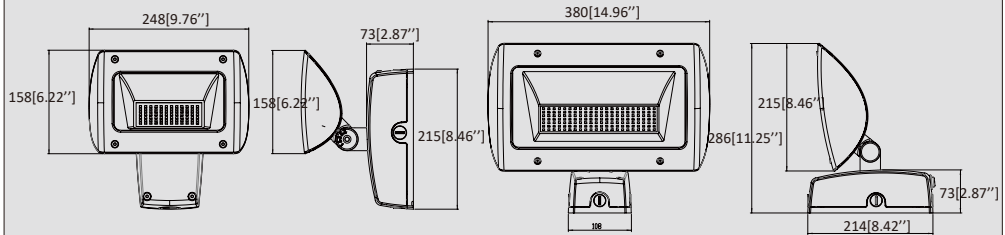


COMMERCIAL OUTDOOR LIGHT

MODEL: WLL120/WLL140

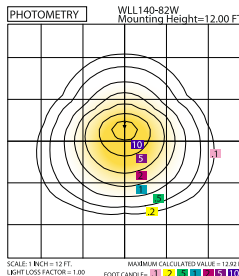
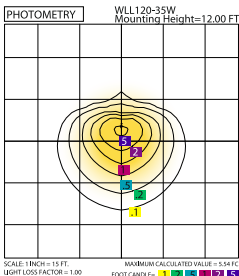


NOMENCLATURE	LUMENS(LM)	EFFICACY(LPW)	INPUT VOLTAGE	CRI	DISTRIBUTION	EQUIVALENCY(W)	OPERATING TEMP	WARRANTY
WLL120-28W	3500LM	UP TO 120LPW	120-277V	>70	Forward Throw	70W MH	-30-40°C	5 YEARS
WLL120-45W	5200LM	UP TO 120LPW	120-277V	>70	Forward Throw	100W MH	-30-40°C	5 YEARS
WLL140-80W	9600LM	UP TO 120LPW	120-277V	>70	Forward Throw	150W MH	-30-40°C	5 YEARS



MODEL	WATTAGE	CCT	VOLTAGE	DIMMING OPTION	OPTIONS	SURGE PROTECTOR	HOUSING FINISH
WLL 120	28W	40K = 4000K	V8 =120-277V V9 =347-480V	D =Dimming N =Non-Dimming	PC = Photocell NA = None	NA = None S1 = Surge Protector	BZ = B ronze SL = Silver WH = White GY = Gray BK = Black
	45W	50K = 5000K					
WLL 140	80W						

ORDERING INFORMATION (WLL140-80W-40K-V8-D-PC-S1-BZ)



- Industrial grade Impact & weather resistant fixture with die cast housings and clear tempered glass lenses
- 120 degree adjustable head with full cut off option
- 0-10V dimming optional
- Photocell and photocell cover are optional.
- Name brand chip and high quality driver @ 5 year warranty

ADDITIONAL PHOTOMETRICS AVAILABLE ONLINE

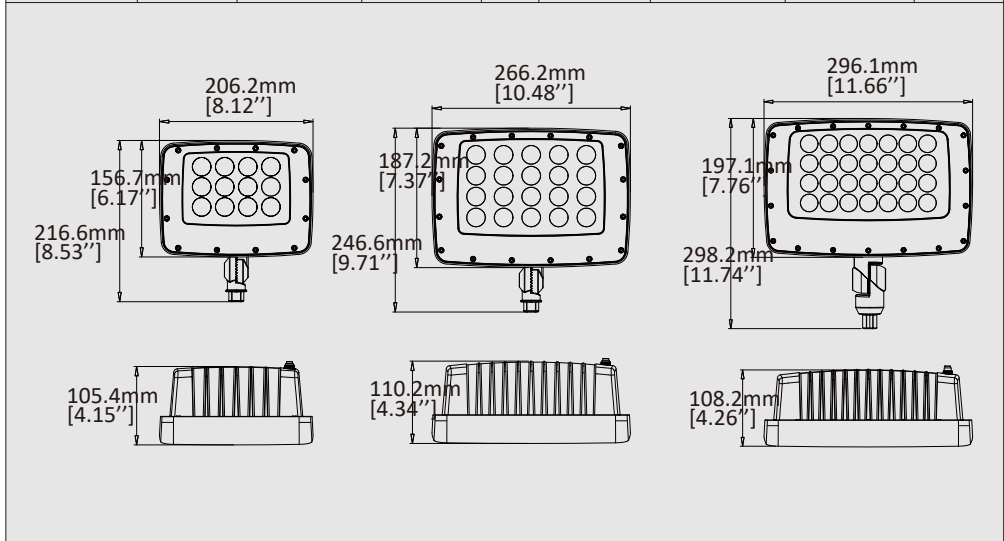
FLOOD DESCRIPTION

COMMERCIAL OUTDOOR LIGHT

MODEL: FLL410/FLL420/FLL430



NOMENCLATURE	LUMENS(LM)	EFFICACY(LPW)	INPUT VOLTAGE	CRI	DISTRIBUTION	EQUIVALENCY(W)	OPERATING TEMP	WARRANTY
FLL410-45W	5506LM	UP TO 125LPW	120-277V	>70	WIDE BEAM	175W MH	-30-40°C	5 YEARS
FLL420-70W	8583LM	UP TO 125LPW	120-277V	>70	WIDE BEAM	250W MH	-30-40°C	5 YEARS
FLL430-100W	12928LM	UP TO 130LPW	120-277V	>70	WIDE BEAM	400W MH	-30-40°C	5 YEARS



- Designed for maximum aesthetic appeal and thermal management.
- Impact & weather resistant fixture with die cast aluminum housings and tempered glass lenses.
- Adjustable knuckle arm mount as standard.
- Photocell included with optional photocell cover.
- Name brand chip and driver @ 5year warranty.

FLOOD DESCRIPTION



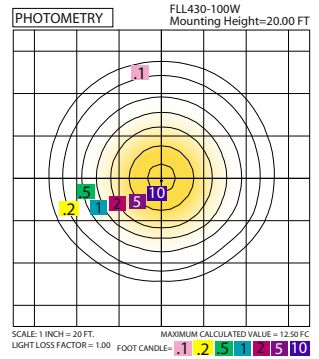
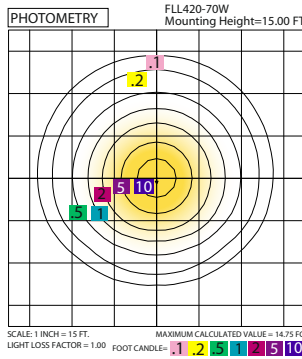
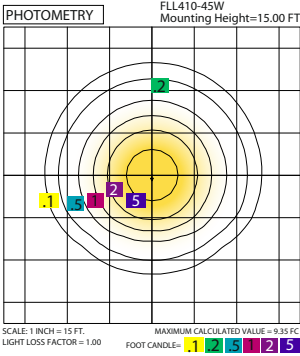
COMMERCIAL OUTDOOR LIGHT

MODEL: FLL410/FLL420/FLL430



MODEL	WATTAGE	CCT	VOLTAGE	DIMMING OPTION	OPTIONS	HOUSING FINISH	
FLL410	45W	30K = 3000K	V8 = 120-277V	D = Dimming N = Non-Dimming	PC = Photocell NA = None	BZ = Bronze	SL = Silver
FLL420	70W	40K = 4000K				WH = White	GY = Gray
FLL430	100W	50K = 5000K				BK = Black	

ORDERING INFORMATION (FLL410-45W-40K-V8-D-PC-BZ)



FLOOD LIGHT DESCRIPTION

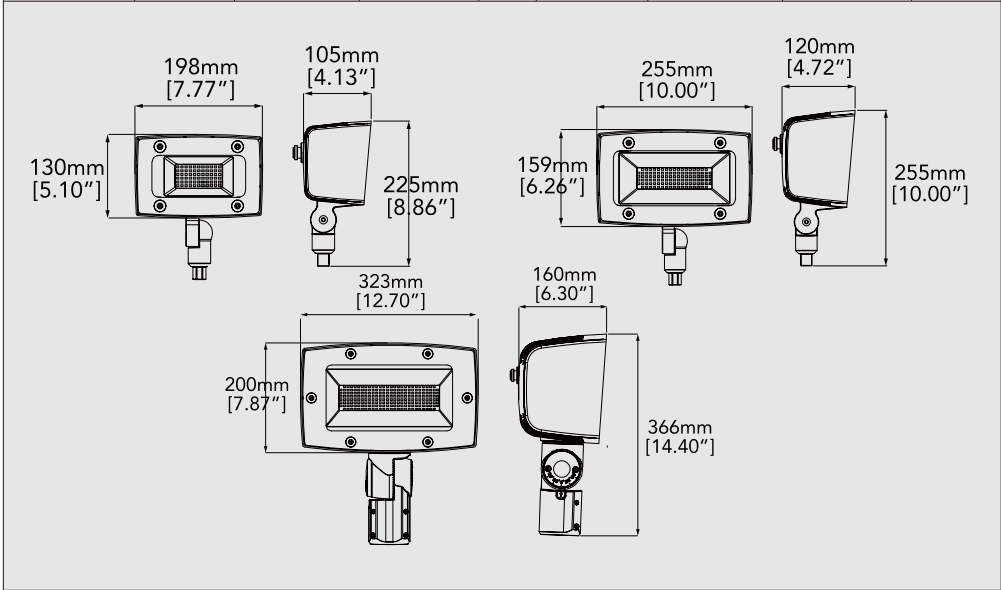


COMMERCIAL OUTDOOR LIGHT

MODEL: FLL310/FLL320/FLL330/FLL340/FLL350



NOMENCLATURE	LUMENS(LM)	EFFICACY(LPW)	INPUT VOLTAGE	CRI	DISTRIBUTION	EQUIVALENCY(W)	OPERATING TEMP	WARRANTY
FLL310-20W	2400LM	UP TO 122LPW	120-277V 347-480V	>70	Wide Beam	50W MH	-30-40°C	5 YEARS
FLL320-50W	6500LM	UP TO 130LPW	120-277V 347-480V	>70	Wide Beam	150W MH	-30-40 C	5 YEARS
FLL330-80W	10000LM	UP TO 104LPW	120-277V 347-480V	>70	Wide Beam	250W MH	-30-40°C	5 YEARS
FLL330-100W	12000LM	UP TO 104LPW	120-277V 347-480V	>70	Wide Beam	250W MH	-30-40°C	5 YEARS



- Economic, versatile, high perform flood family with multiple mounting configurations to fit any application.
- Impact & weather resistant fixture with die cast aluminum housings and tempered glass lenses.
- Button Photocell and 3/7 pin twist lock receptacle as optional.
- Name brand chip and driver @ 5 year warranty.

FLOOD LIGHT DESCRIPTION



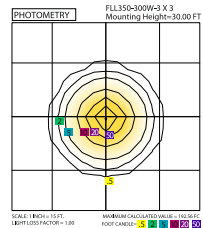
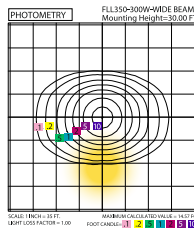
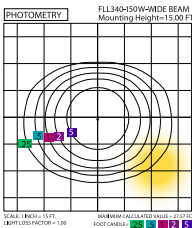
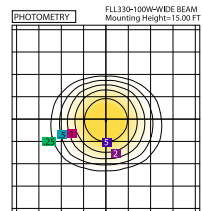
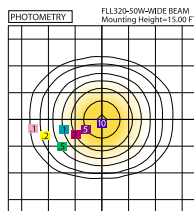
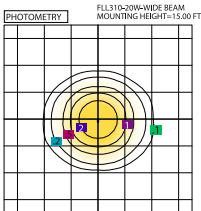
COMMERCIAL OUTDOOR LIGHT

MODEL: FLL310/FLL320/FLL330/FLL340/FLL350



MODEL	WATTAGE	CCT	VOLTAGE	DIMMING OPTION	OPTIONS	DISTRIBUTION	SURGE PROTECTOR
FLL310	20W	30K = 3000K 40K = 4000K 50K = 5000K	V8 = 120-277V V9 = 347-480V	D = Dimming N = Non-Dimming	PC = Photocell NA = None	W=Wide Beam N= 3 X 3	NA = None S1 = Surge Protector
FLL320	50W						
FLL330	80W 100W						
HOUSING FINISH		MOUNTING					
BZ = Bronze BK = Black GY = Gray	SL = Silver WH = White	SF = Slip Fitter TR = Trunnion KN = Knuckle					

ORDERING INFORMATION (FLL350-300W-40K-V8-D-PC-W-S1-BZ-SF)



ADDITIONAL PHOTOMETRICS AVAILABLE ONLINE

MOUNTINGS/ACCESSORIES



VANDAL SHIELD



VISOR



SLIP FITTER



TRUNNION



WIREGUARD

CANOPY LIGHT DISCRIPTION

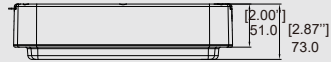
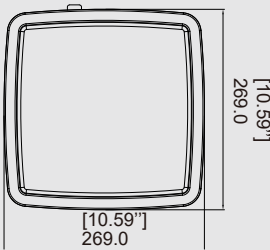


COMMERCIAL OUTDOOR LIGHT

MODEL: CVL603

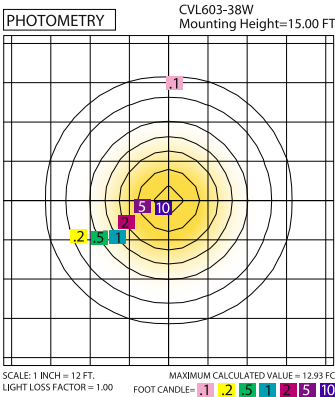


NOMENCLATURE	LUMENS(LM)	EFFICACY(LPW)	INPUT VOLTAGE	CRI	DISTRIBUTION	EQUIVALENCY(W)	OPERATING TEMP	WARRANTY
CVL603-38W	3968LM	UP TO 110LPW	120-277V	>70	N/A	150W MH	-30-40°C	5 YEARS



MODEL	WATTAGE	CCT	VOLTAGE	DIMMING OPTION	HOUSING FINISH
CVL603	38W	30K = 3000K 40K = 4000K 50K = 5000K	V8 = 120-277V	D = Dimming N = Non-Dimming	BZ = Bronze SL = Silver WH = White GY = Gray BK = Black

ORDERING INFORMATION (CVL603-38W-40K-V8-D-BZ)



- Impact & weather resistant fixture with die cast aluminum back housing and polycarbonate lenses. Glare free and frosted lens for an inviting and even light distribution.
- Universal mounting plate with integral wire hooks for easy hands free installation.
- Capable for conduit wiring application.
- 0-10v dimming as standard.
- Name brand chip and driver @ 5 year warranty.

GARAGE LIGHT DESCRIPTION

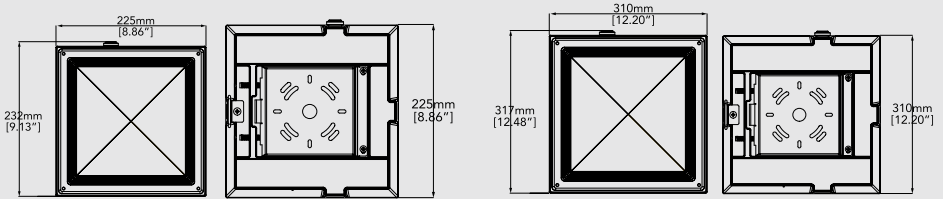


COMMERCIAL OUTDOOR LIGHT

MODEL: CVL403/CVL503

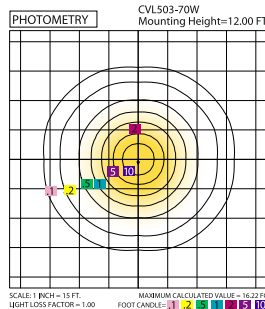
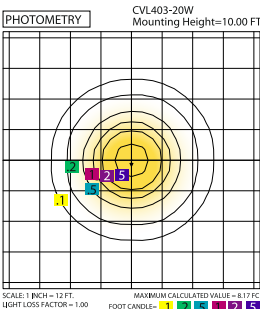


NOMENCLATURE	LUMENS(LM)	EFFICACY(LPW)	INPUT VOLTAGE	CRI	DISTRIBUTION	EQUIVALENCY(W)	OPERATING TEMP	WARRANTY
CVL403-20W	2212LM	UP TO 114LPW	120-277V	>70	N/A	50W MH	-30-40°C	5 YEARS
CVL503-50W	5530LM	UP TO 115LPW	120-277V	>70	N/A	150W MH	-30-40 C	5 YEARS
CVL503-70W	6911LM	UP TO 101LPW	120-277V	>70	N/A	200W MH	-30-40°C	5 YEARS



MODEL	WATTAGE	CCT	VOLTAGE	DIMMING OPTION	ELECTRICAL OPTIONS	SURGE PROTECTOR	HOUSING FINISH
CVL403	20W	30K = 3000K 40K = 4000K 50K = 5000K	V8 = 120-277V	D = Dimming N = Non-Dimming	PC = Photocell NA = None	S1 = Surge Protector NA = None	BZ = B ronze BK = Black
CVL503	50W 70W						

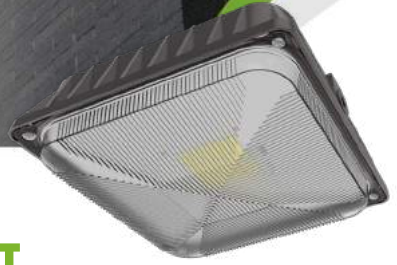
ORDERING INFORMATION (CVL503-70W-40K-V8-D-PC-S1-BZ)



- Impact & weather resistant fixture with die cast back housing and polycarbonate Prismatic lenses.
- Universal mounting plate with easy hook mechanism for hands free installation.
- Capable for conduit wiring application.
- Name brand chip and driver @ 5 year warranty

ADDITIONAL PHOTOMETRICS AVAILABLE ONLINE

GARAGE LIGHT DESCRIPTION

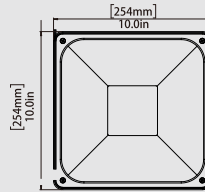
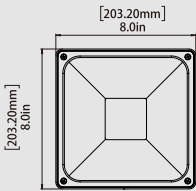


COMMERCIAL OUTDOOR LIGHT

MODEL: CVL601/CVL602

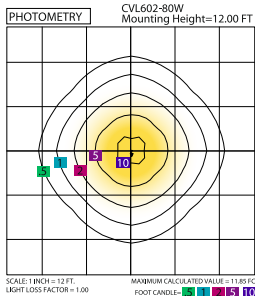
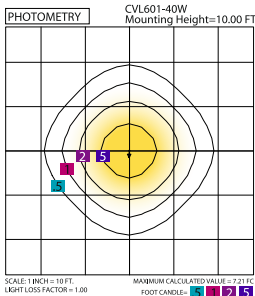


INPUT POWER(W)	LUMENS(LM)	EFFICACY(LPW)	INPUT VOLTAGE	CRI	DISTRIBUTION	EQUIVALENCY(W)	OPERATING TEMP	WARRANTY
CVL601-40W	4800LM	UP TO 120LPW	120-277V	>70	CANOPY	150W MH	-30-40°C	5 YEARS
CVL602-80W	9600LM	UP TO 120LPW	120-277V	>70	CANOPY	250W MH	-30-40°C	5 YEARS



MODEL	WATTAGE	CCT	VOLTAGE	DIMMING OPTION	ELECTRICAL OPTIONS	SURGE PROTECTOR	HOUSING FINISH
CVL601	40W	30K = 3000K 40K = 4000K 50K = 5000K	V8 = 120-277V	D = Dimming N = Non- Dimming	PC = Photocell NA = None	S1 = Surge Protector NA = None	BZ = B bronze BK = Black
CVL602	80W						

ORDERING INFORMATION (CVL601-40W-40K-V8-D-PC-S1-BZ)



- Impact & weather resistant fixture with die cast back housing and polycarbonate Prismatic lenses.
- Universal mounting plate with easy hook mechanism for hands free installation.
- Capable for conduit wiring application.
- 0-10v dimming as an option.
- Name brand chip and driver @ 5 year warranty.

ADDITIONAL PHOTOMETRICS AVAILABLE ONLINE

DUSK TO DAWN DESCRIPTION

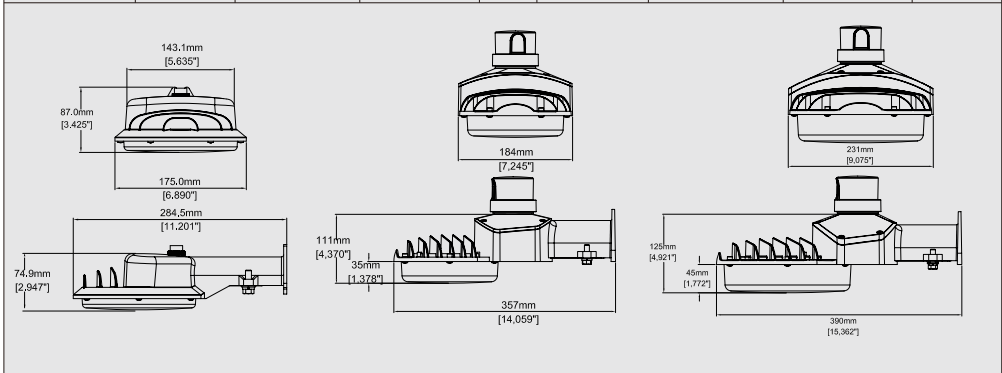


COMMERCIAL OUTDOOR LIGHT

MODEL: DTD430/DTD440/DTD450



NOMENCLATURE	LUMENS(LM)	EFFICACY(LPW)	INPUT VOLTAGE	CRI	DISTRIBUTION	EQUIVALENCY(W)	OPERATING TEMP	WARRANTY
DTD430-20W	2401LM	UP TO 120LPW	120-277V	>70	N/A	50W MH	-30-40°C	5 YEARS
DTD440-55W	6970LM	UP TO 129LPW	120-277V	>70	N/A	150W MH	-30-40°C	5 YEARS
DTD450-75W	9138LM	UP TO 122LPW	120-277V	>70	N/A	250W MH	-30-40°C	5 YEARS



- Replace traditional HID barn light with long-life LED version, attractive fin design for thermal management.
- Impact & weather resistant fixture with die cast aluminum housings and polycarbonate Prismatic lenses.
- Universal mounting design available for wall mount and tenon mount.
- 3/7 pin receptacle optional.
- 0-10v dimming as an option.
- Name brand chip and driver @ 5 year warranty.

DUSK TO DAWN DESCRIPTION



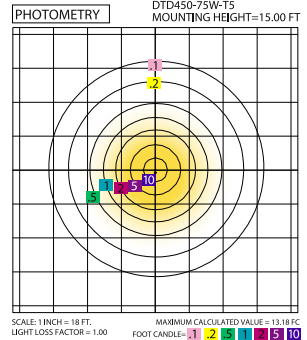
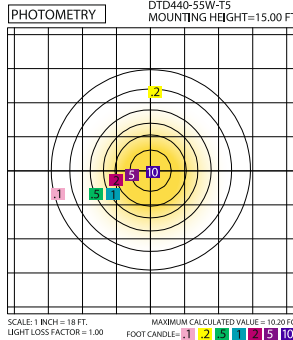
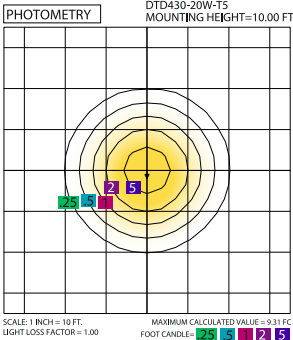
COMMERCIAL OUTDOOR LIGHT

MODEL: DTD430/DTD440/DTD450



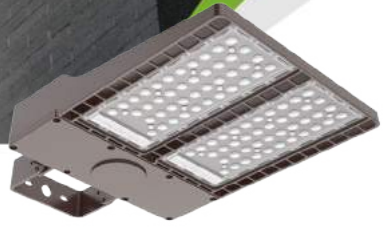
MODEL	WATTAGE	CCT	VOLTAGE	DIMMING OPTION	OPTIONS	DISTRIBUTION
DTD430	20W	30K = 3000K 40K = 4000K 50K = 5000K	V8 = 120-277V V9 = 347-480V	D = Dimming N = Non-Dimming	PC = Photocell NA = None	T3=TYPE III T5=TYPE V NA=NONE
DTD440	55W					
DTD450	75W					
SURGE PROTECTOR		HOUSING FINISH		MOUNTING		
NA = None S1 = Surge Protector		BZ = Bronze BK = Black GY = Gray	SL = Silver WH = White	24 = 24" Arm NA = None		

ORDERING INFORMATION(DTD430-20W-40K-V8-N-PC-T3-S1-BZ-24)



ADDITIONAL PHOTOMETRICS AVAILABLE ONLINE

AREA LIGHT DESCRIPTION

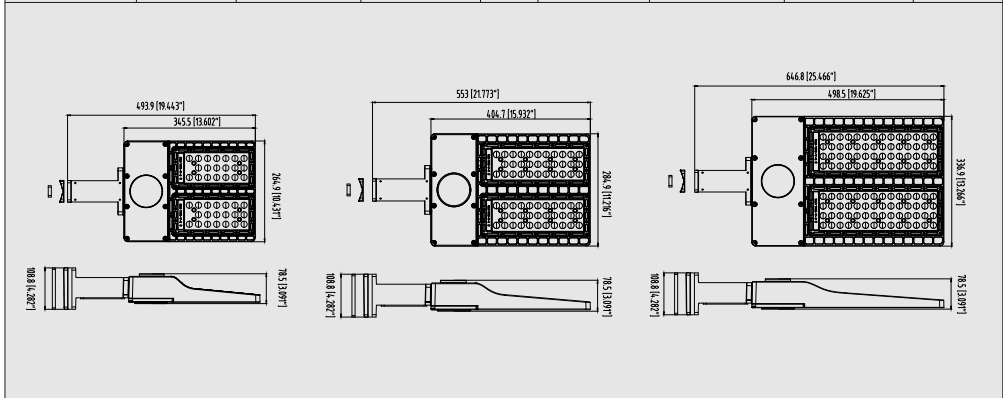


COMMERCIAL OUTDOOR LIGHT

MODEL: FSL530/FSL540/FSL550

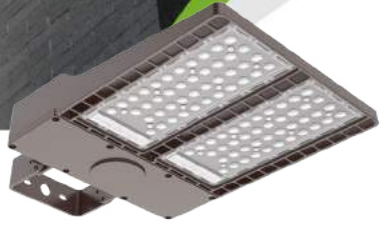


NOMENCLATURE	LUMENS(LM)	EFFICACY(LPW)	INPUT VOLTAGE	CRI	DISTRIBUTION	EQUIVALENCY(W)	OPERATING TEMP	WARRANTY
FSL530-100W	13500LM	UP TO 135LPW	120-277V 347-480V	>70	T2, T3, T4, T5	175W MH	-30-40°C	5 YEARS
FSL530-150W	20250LM	UP TO 135LPW	120-277V 347-480V	>70	T2, T3, T4, T5	250W MH	-30-40°C	5 YEARS
FSL540-200W	27000LM	UP TO 135LPW	120-277V 347-480V	>70	T2, T3, T4, T5	400W MH	-30-40°C	5 YEARS
FSL550-250W	33750LM	UP TO 135LPW	120-277V 347-480V	>70	T2, T3, T4, T5	1000W MH	-30-40 C	5 YEARS
FSL550-300W	40500LM	UP TO 135LPW	120-277V 347-480V	>70	T2, T3, T4, T5	1500W MH	-30-40 C	5 YEARS



- Industrial grade area light family with multiple mounting configurations for maximum application versatility.
- Impact & weather resistant fixture with die cast aluminium housings and polycarbonate T2,T3,T4,T5 Optic lenses.
- 3/7 pin twist lock receptacle as optional.
- 0-10v dimming as an option.
- Name Brand chip and high quality driver @ 5 year warranty.

AREA LIGHT DESCRIPTION



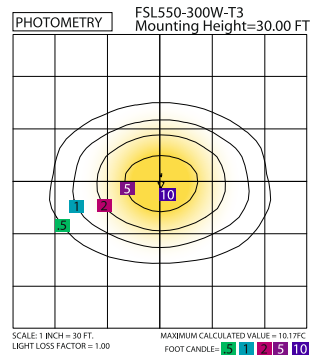
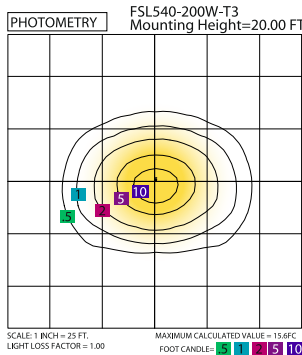
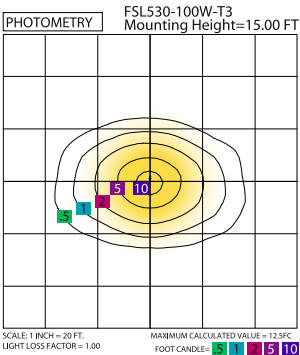
COMMERCIAL OUTDOOR LIGHT

MODEL: FSL530/FSL540/FSL550



MODEL	WATTAGE	CCT	VOLTAGE	DIMMING OPTION	OPTIONS	DISTRIBUTION	SURGE PROTECTOR
FSL530	100W	30K = 3000K	V8 = 120-277V	D = Dimming	PC = Photocell	T2=TYPE II	NA = None
	150W	40K = 4000K	V9 = 347-480V	N = Non-Dimming	NA = None	T3=TYPE III	S1 = Surge Protector
FSL540	200W	50K = 5000K			MS = Motion Sensor	T4=TYPE IV	
F550	250W					T5=TYPE V	
	300W						
HOUSING FINISH		MOUNTING					
BZ = Bronze	SL = Silver	SF = Slip Fitter					
BK = Black	WH = White	TR = Trunnion					
GY = Gray		EA = Extension Arm					

ORDERING INFORMATION (FSL540-250W-40K-V8-D-PC-T2-S1-BZ-EA)



ADDITIONAL PHOTOMETRICS AVAILABLE ONLINE

MOUNTINGS/ACCESSORIES

EXTENSION ARM/STANDARD SLIP FITTER (S2)/TRUNNION





PROFESSIONAL LIGHTS

CEILING LIGHT DESCRIPTION

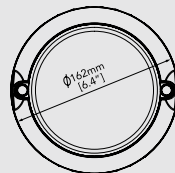
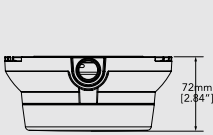


PROFESSIONAL OUTDOOR LIGHT

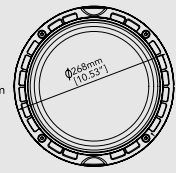
MODEL: CLL220/CLL440



NOMENCLATURE	LUMENS(LM)	EFFICACY(LPW)	INPUT VOLTAGE	CRI	DISTRIBUTION	EQUIVALENCY(W)	OPERATING TEMP	WARRANTY
CLL220-20W	2212LM	UP TO 110LPW	120-277V	>70	N/A	50W MH	-30-40°C	5 YEARS
CLL440-40W	4549LM	UP TO 110LPW	120-277V	>70	N/A	100W MH	-30-40°C	5 YEARS



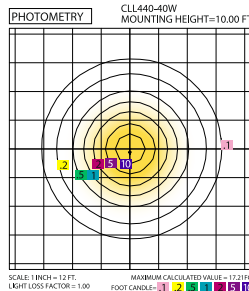
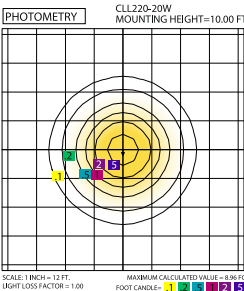
CLL220



CLL440

MODEL	WATTAGE	CCT	VOLTAGE	DIMMING OPTION	MECHANICAL ACCESSORIES	HOUSING FINISH
CLL220	20W	30K = 3000K 40K = 4000K	V8 = 120-277V	D = Dimming N = Non-Dimming	ST = Standard WG = Wire Guard	BZ = Bronze BK = Black
CLL440	40W	50K = 5000K				

ORDERING INFORMATION (CLL220-20W-40K-V8-D-ST-BZ)



- Impact & weather resistant fixture with diecast aluminum back housing and polycarbonate lenses. Glare free and frosted lens for an inviting and even light distribution
- Universal mounting plate with integral wirehooks for easy hands free installation. Capable for conduit wiring application
- 0-10V dimming as standard
- Name brand chip and driver @ 5 year warranty

ADDITIONAL PHOTOMETRICS AVAILABLE ONLINE

MOUNTINGS/ACCESSORIES

WIREGUARD



WALL PACK DESCRIPTION

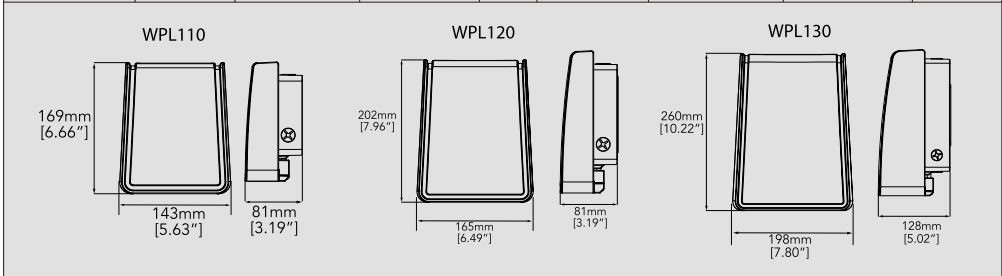


PROFESSIONAL OUTDOOR LIGHT

MODEL: WPL110/WPL120/WPL130



NOMENCLATURE	LUMENS(LM)	EFFICACY(LPW)	INPUT VOLTAGE	CRI	DISTRIBUTION	EQUIVALENCY(W)	OPERATING TEMP	WARRANTY
WPL110-15W	1800LM	UP TO 125LPW	120-277V	>70	T2,T4	50W MH	-30-40°C	5 YEARS
WPL120-25W	3000LM	UP TO 125LPW	120-277V	>70	T2,T4	70W MH	-30-40°C	5 YEARS
WPL130-40W	4800LM	UP TO 125LPW	120-277V	>70	T2,T4	100W MH	-30-40°C	5 YEARS

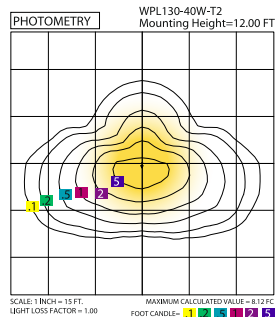
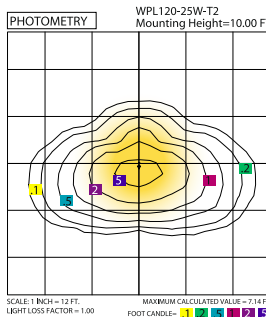
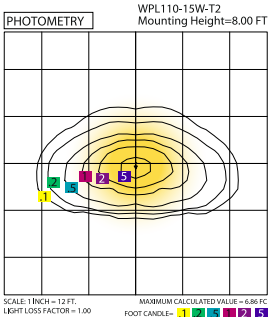


MODEL	WATTAGE	CCT	VOLTAGE	DIMMING OPTION	OPTIONS	Distribution	SURGE PROTECTOR
WPL110	15W	30K = 3000K	V8 = 120-277V	D = Dimming N = Non-Dimming	PC = Photocell NA = None	T2 = Type II T4 = Type IV	NA = None S1 = Surge Protector
WPL120	25W	40K = 4000K					
WPL130	40W	50K = 5000K					

HOUSING FINISH

BZ = Bronze SL = Silver
 WH = White GY = Gray
 BK = Black

ORDERING INFORMATION (WPL110-15W-40K-V8-N-PC-T2-S1-BZ)



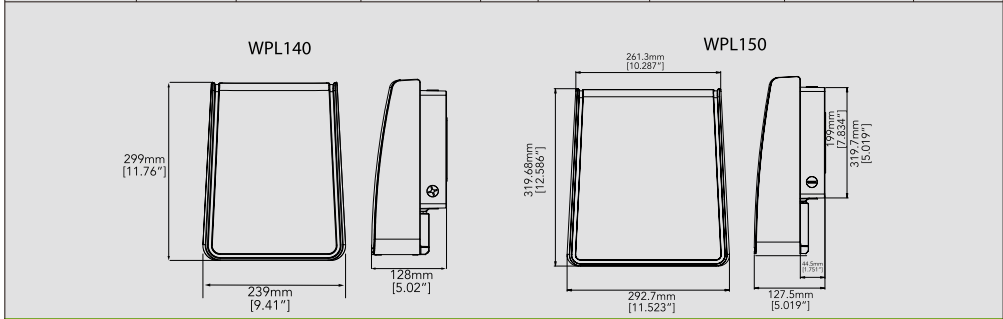
WALL PACK DESCRIPTION

PROFESSIONAL OUTDOOR LIGHT

MODEL: WPL140/WPL150



NOMENCLATURE	LUMENS(LM)	EFFICACY(LPW)	INPUT VOLTAGE	CRI	DISTRIBUTION	EQUIVALENCY(W)	OPERATING TEMP	WARRANTY
WPL140-70W	8400LM	UP TO 125LPW	120-277V	>70	T2,T4	150W MH	-30-40°C	5 YEARS
WPL150-100W	12000LM	UP TO 125LPW	120-277V	>70	T2,T4	250W MH	-30-40°C	5 YEARS

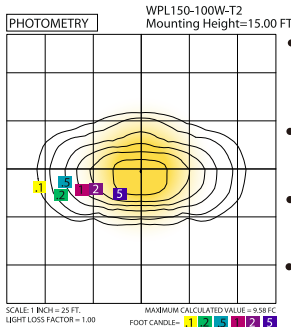
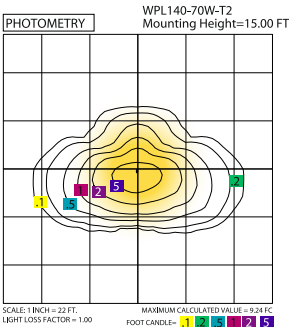


MODEL	WATTAGE	CCT	VOLTAGE	DIMMING OPTION	OPTIONS	Distribution	SURGE PROTECTOR
WPL140	70W	30K = 3000K	V8 = 120-277V	D = Dimming N = Non-Dimming	PC = Photocell NA = None	T2 = Type II T4 = Type IV	NA = None S1 = Surge Protector
WPL150	100W	40K = 4000K					
		50K = 5000K					

HOUSING FINISH

BZ = B ronze SL = Silver
 WH = White GY = Gray
 BK = Black

ORDERING INFORMATION (WPL140-70W-40K-V1-N-PC-T2-S1-BZ)



- Industrial grade Impact & weather resistant fixture with die cast aluminum housings and clear polycarbonate T2 & T4 optic lenses
- 0-10V dimming @ DLC 5.1 Standard Photocell and photocell cover are optional
- Lumileds 5050 chip and high quality driver @ 5 year warranty
- Easy hook hands free wall mount installation. Dark sky compliant mounting

AREA LIGHT DESCRIPTION

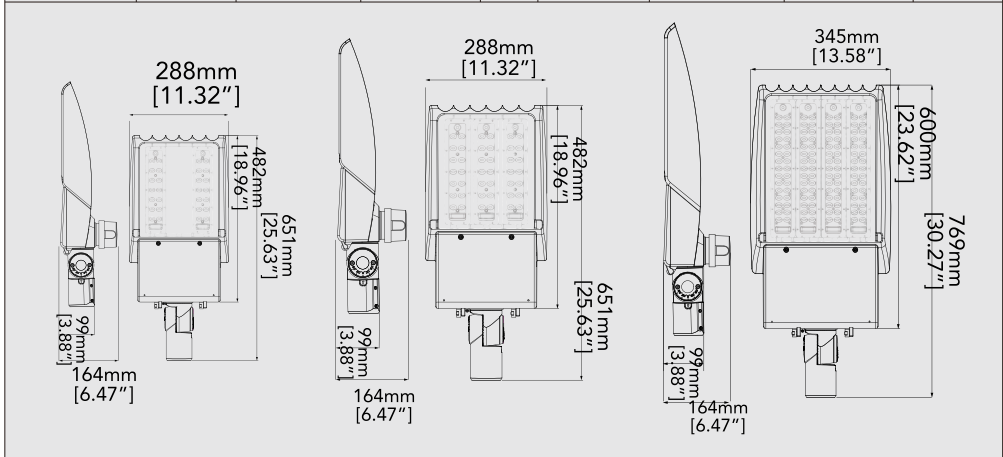


PROFESSIONAL OUTDOOR LIGHT

MODEL: ARL460/ARL480/ARL500



NOMENCLATURE	LUMENS(LM)	EFFICACY(LPW)	INPUT VOLTAGE	CRI	DISTRIBUTION	EQUIVALENCY(W)	OPERATING TEMP	WARRANTY
ARL460-60W	8597LM	UP TO 131LPW	120-277V, 347-480V	>70	T2, T3, T4, T5	200W MH	-30-40°C	5 YEARS
ARL460-90W	12517LM	UP TO 131LPW	120-277V, 347-480V	>70	T2, T3, T4, T5	250W MH	-30-40°C	5 YEARS
ARL460-120W	14717LM	UP TO 125LPW	120-277V, 347/480V	>70	T2, T3, T4, T5	350W MH	-30-40°C	5 YEARS
ARL480-150W	19933LM	UP TO 142LPW	120-277V, 347/480V	>70	T2, T3, T4, T5	400W MH	-30-40°C	5 YEARS
ARL480-200W	24794LM	UP TO 131LPW	120-277V, 347/480V	>70	T2, T3, T4, T5	600W MH	-30-40 C	5 YEARS
ARL480-250W	31134LM	UP TO 127LPW	120-277V, 347-480V	>70	T2, T3, T4, T5	600W MH	-30-40°C	5 YEARS
ARL500-300W	43081LM	UP TO 138LPW	120-277V, 347-480V	>70	T2, T3, T4, T5	600W MH	-30-40°C	5 YEARS
ARL500-380W	51144LM	UP TO 138LPW	120-277V, 347-480V	>70	T2, T3, T4, T5	1000W MH	-30-40°C	5 YEARS



- Designed for maximum aesthetic appeal and thermal management with multiple mounting configurations for maximum application versatility
- Impact & weather resistant fixture with die cast housings and polycarbonate T2,T3,T4,T5 Optic lenses
- 3/7 pin twist lock receptacle as optional
- 0-10v dimming as an option
- LG 3535 chip and YG driver @ 5 year warranty

AREA LIGHT DESCRIPTION



PROFESSIONAL OUTDOOR LIGHT

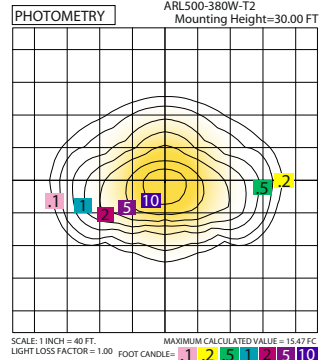
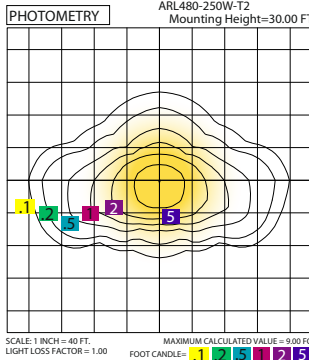
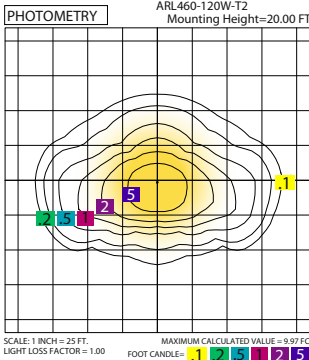
MODEL: ARL460/ARL480/ARL500



MODEL	WATTAGE	CCT	VOLTAGE	DIMMING OPTION	OPTIONS	Distribution	SURGE PROTECTOR
ARL460	60W	30K = 3000K	V8 = 120-277V	D = Dimming N = Non-Dimming	PC = Photocell MS = Motion Sensor NA = None	T2 = TYPE II T3 = TYPE III T4 = TYPE IV T5 = TYPE V	NA = None S1 = Surge Protector
	90W	40K = 4000K	V9 = 347-480V				
	120W	50K = 5000K					
ARL480	150W 200W 250W						
ARL500	300W 380W						

HOUSING FINISH		MOUNTING	
BZ = B ronze	SL = Silver	WM = Wall Mount	TR = Trunnion
WH = White	GY = Gray	SF = Slip Fitter	EA = Extention Arm
BK = Black		PB = Pole Bracket	

ORDERING INFORMATION (ARL480-250W-40K-V8-D-PC-T5-S1-BZ-SF)



ADDITIONAL PHOTOMETRICS AVAILABLE ONLINE

MOUNTINGS/ACCESSORIES



EXTENSION ARM



POLE BRACKET



SLIP FITTER



TRUNNION



WALL

AREA LIGHT

CCT Selectable

DESCRIPTION

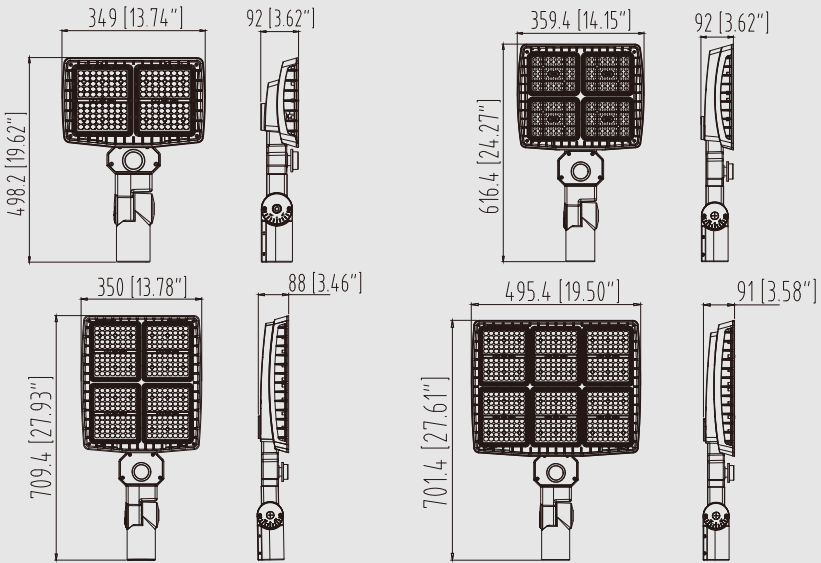


PROFESSIONAL OUTDOOR LIGHT

MODEL: FSL620/FSL630/FSL640/FSL650



NOMENCLATURE	LUMENS(LM)	EFFICACY(LPW)	INPUT VOLTAGE	CRI	DISTRIBUTION	EQUIVALENCY(W)	OPERATING TEMP	WARRANTY
FSL620-80W	9600LM-11200LM	120LPW TO 140LPW	120-277V	>70	T3,T4,T5	400W MH	-30-40°C	5 YEARS
FSL630-120W	14400LM-16800LM	120LPW TO 140LPW	120-277V	>70	T3,T4,T5	400W MH	-30-40°C	5 YEARS
FSL640-150W	18000LM-21000LM	120LPW TO 140LPW	120-277V	>70	T3,T4,T5	1000W MH	-30-40°C	5 YEARS
FSL650-250W	30000LM-35000LM	120LPW TO 140LPW	120-277V	>70	T3,T4,T5	1500W MH	-30-40°C	5 YEARS



- Designed for maximum aesthetic appeal and thermal management with multiple mounting configurations for maximum application versatility
- Impact & weather resistant fixture with die cast housings and polycarbonate T3,T4,T5 Optic lenses
- button photocell and 3/7 pin twist lock receptacle as optional
- 0-10v dimming as standard @ DLC 5.1 Premium
- 3000K, 4000K, 5000K CCT selectable by switch
- Basic and network sensor are optional
- Name brand 3030 chip and high quality driver @ 5 years warranty

AREA LIGHT

CCT Selectable

DESCRIPTION



PROFESSIONAL OUTDOOR LIGHT

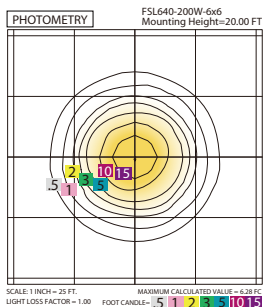
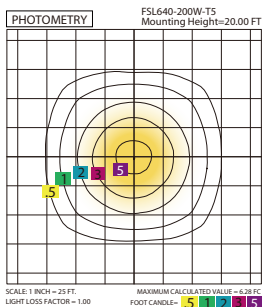
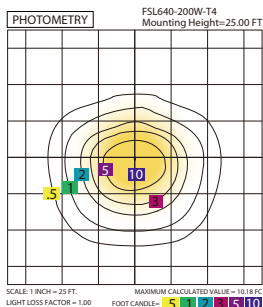
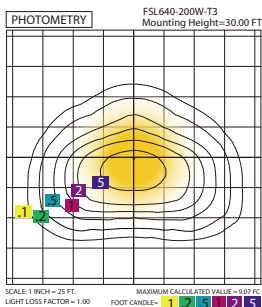
MODEL: FSL620/FSL630/FSL640/FSL650



MODEL	WATTAGE	CCT	VOLTAGE	DIMMING OPTION	OPTIONS	DISTRIBUTION	SURGE PROTECTOR
FSL620	80W	CS = 3000K/4000K/	V8 = 120-277V	D = Dimming	PC = Photocell	T3 = TYPE III	NA = None
FSL630	120W	5000K		N = Non-Dimming	MS = Motion Sensor	T4 = TYPE IV	S1 = Surge Protector
FSL640	150W				NA = None	T5 = TYPE V	
FSL650	250W					W = 6x6	

HOUSING FINISH			MOUNTING	
BZ = Bronze	SL = Silver	GY = Gray	WM = Wall Mount	KN = Knuckle
WH = White	BK = Black		SF = Slip Fitter	SA = Straight Arm

ORDERING INFORMATION (FSL620-80W-CS-V8-D-NA-T3-S1-BZ-WM)



MOUNTINGS/ACCESSORIES

ADDITIONAL PHOTOMETRICS AVAILABLE ONLINE

Wall Mount : FSL-WM / Knuckle Mount : FSL-KN / Slip Fitter Mount: FSL-SF/Straight Arm Mount: FSL-SA

AREA LIGHT DESCRIPTION

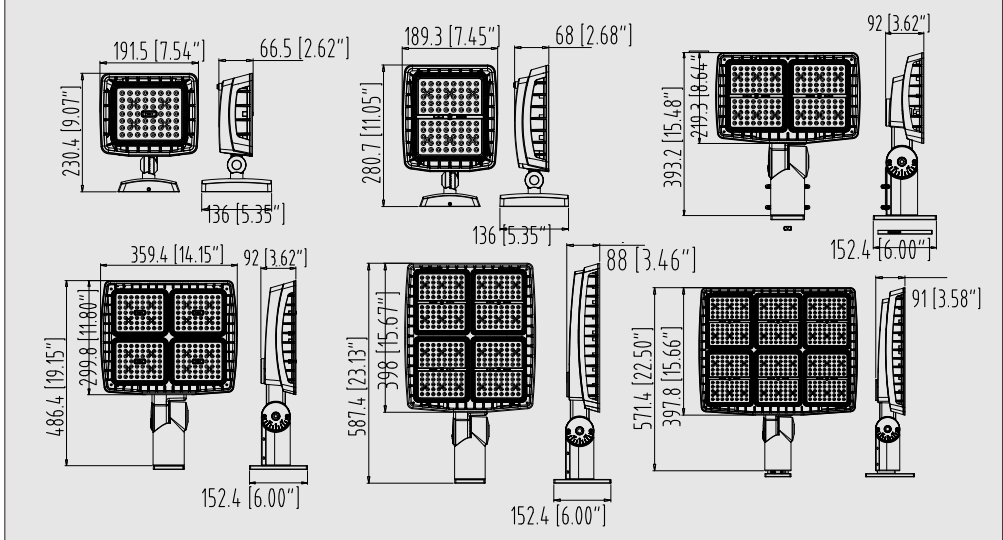


PROFESSIONAL OUTDOOR LIGHT

MODEL: FSL600/FSL610/FSL620/FSL630/FSL640/FSL650



NOMENCLATURE	LUMENS(LM)	EFFICACY(LPW)	INPUT VOLTAGE	CRI	DISTRIBUTION	EQUIVALENCY(W)	OPERATING TEMP	WARRANTY
FSL600-32W	4330LM	UP TO 140LPW	120-277V	>70	T3,T4,T5	150W MH	-30-40°C	5 YEARS
FSL610-64W	8200LM	UP TO 140LPW	120-277V	>70	T3,T4,T5	250W MH	-30-40°C	5 YEARS
FSL620-100W	13062LM	UP TO 140LPW	120-277V 347-480V	>70	T3,T4,T5	400W MH	-30-40°C	5 YEARS
FSL630-150W	20000LM	UP TO 140LPW	120-277V 347-480V	>70	T3,T4,T5	400W MH	-30-40 C	5 YEARS
FSL640-200W	27000LM	UP TO 140LPW	120-277V 347-480V	>70	T3,T4,T5	1000W MH	-30-40°C	5 YEARS
FSL650-300W	40000LM	UP TO 140LPW	120-277V 347-480V	>70	T3,T4,T5	1500W MH	-30-40°C	5 YEARS



- Designed for maximum aesthetic appeal and thermal management with multiple mounting configurations for maximum application versatility
- Impact & weather resistant fixture with die cast housings and polycarbonate T3,T4,T5 Optic lenses
- button photocell and 3/7 pin twist lock receptacle as optional
- 0-10v dimming as standard @ DLC 5.1 Premium
- Name brand 3030 chip and high quality driver @ 5 years warranty

AREA LIGHT DESCRIPTION



PROFESSIONAL OUTDOOR LIGHT

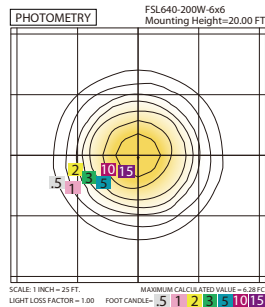
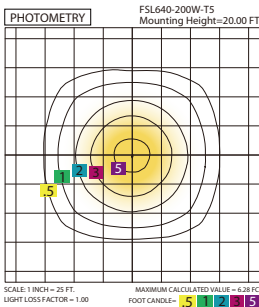
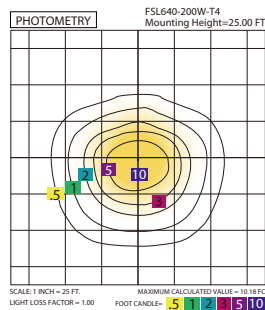
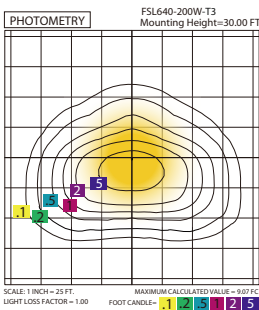
MODEL: FSL600/FSL610/FSL620/FSL630/FSL640/FSL650



MODEL	WATTAGE	CCT	VOLTAGE	DIMMING OPTION	OPTIONS	DISTRIBUTION	SURGE PROTECTOR
FSL600	32W	30K=3000K	V8=120-277V	D=Dimming	PC=Photocell	T3=TYPE III	NA=None
FSL610	64W	40K=4000K	V9=347-480V	N=Non-Dimming	NA=None	T4=TYPE IV	S1=Surge Protector
FSL620	100W	50K=5000K				T5=TYPE V	
FSL630	150W					W=6x6	
FSL640	200W						
FSL650	300W						

EB OPTION	HOUSING FINISH	MOUNTING
EB=Emergency Backup NA=None	BZ=Bronze SL=Silver GY=Gray BK=Black WH=White	WM=Wall Mount KN=Knuckle SA=Straight Arm SF=Slip Fitter AA=Adjustable Arm

ORDERING INFORMATION (FSL600-32W-30K-V8-D-PC-T3-S1-EB-BZ-WM)



MOUNTINGS/ACCESSORIES

WALL MOUNT : FSL-WM / KNUCKLE MOUNT : FSL-KN / SLIP FITTER MOUNT: FSL-SF/STRAIGHT ARM MOUNT: FSL-SA
ADJUSTABLE ARM : FSL-AA

ADDITIONAL PHOTOMETRICS AVAILABLE ONLINE

TENNIS LIGHT DESCRIPTION

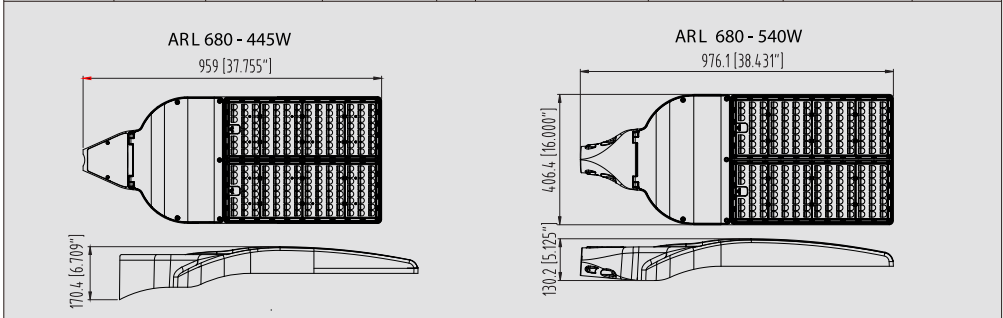


PROFESSIONAL OUTDOOR LIGHT

MODEL: ARL680



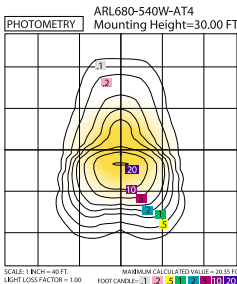
NOMENCLATURE	LUMENS(LM)	EFFICACY(LPW)	INPUT VOLTAGE	CRI	DISTRIBUTION	EQUIVALENCY(W)	OPERATING TEMP	WARRANTY
ARL680-445W	65000LM	UP TO 154LPW	120-277V 347-480V	>70	T3,T4,T5, AT4, AT6	2000W MH	-30-40°C	5 YEARS
ARL680-540W	75000LM	UP TO 143LPW	120-277V	>70	T3,T4,T5, AT4, AT6	2000W MH	-30-40°C	5 YEARS



MODEL	WATTAGE	CCT	VOLTAGE	DIMMING OPTION	OPTIONS	DISTRIBUTION
ARL680	445W 540W	30K = 3000K 40K = 4000K 50K = 5000K	V8 = 120-277V V9 = 347-480V	D = Dimming N = Non-Dimming	PC = Photocell MS = Motion Sensor NA = None	T3 = TYPE III T4 = TYPE IV T5 = TYPE V 4P = AT4

HOUSING FINISH	MOUNTING
BZ = Bronze BK = Black GY = Gray	SL = Silver WH = White MA = Mast Arm SA = Straight Arm

ORDERING INFORMATION (ARL680-445W-40K-V8-D-PC-T5-BZ-MA)



- Specification grade fixture designed for maximum aesthetic appeal with mast arm mount (2-3/8" O.D.) and straight arm mount (3"-4" square/round pole)
- Impact & weather resistant fixture with die cast aluminum housings and polycarbonate lenses
- Proprietary optics engineered for 4-pole (AT4) or 6-pole (AT6) tennis court installations
- IES types 3, 4 and 5 for area lighting applications with field installable backlight shield
- 3/7 pin twist lock receptacle as optional
- 0-10v dimming as standard @ DLC 5.1 Premium
- Lumileds 5050 chip and high quality driver @ 5 year warranty

ADDITIONAL PHOTOMETRICS AVAILABLE ONLINE

HIGHBAY LIGHT DESCRIPTION

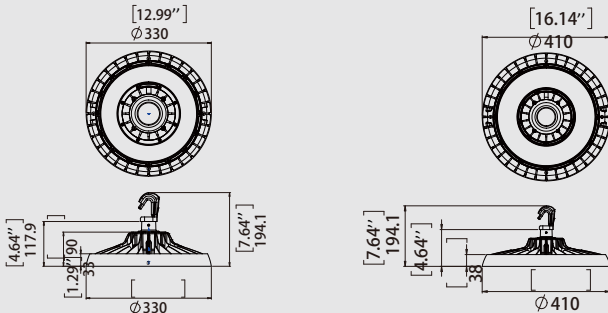


PROFESSIONAL OUTDOOR LIGHT

MODEL: CHL540/CHL550

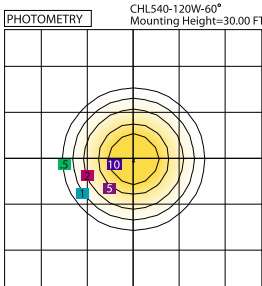


NOMENCLATURE	LUMENS(LM)	EFFICACY(LPW)	INPUT VOLTAGE	CRI	DISTRIBUTION	EQUIVALENCY(W)	OPERATING TEMP	WARRANTY
CHL540-80W	13600LM	UP TO 170LPW	120-277V	>70	60°, 90°, 120°	400W MH	-30-55 C	5 YEARS
CHL540-120W	20400LM	UP TO 170LPW	120-277V	>70	60°, 90°, 120°	600W MH	-30-55°C	5 YEARS
CHL550-150W	25500LM	UP TO 170LPW	120-277V	>70	60°, 90°, 120°	1000W MH	-30-55°C	5 YEARS
CHL550-200W	34000LM	UP TO 170LPW	120-277V	>70	60°, 90°, 120°	1000W MH	-30-55C	5 YEARS

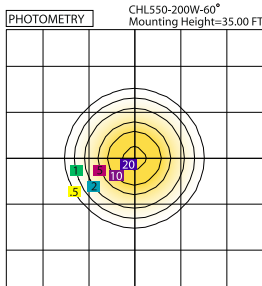


MODEL	WATTAGE	CCT	VOLTAGE	DIMMING OPTION	ELECTRICAL OPTIONS	HOUSING FINISH	MOUNTING
CHL540	80W 120W	30K = 3000K 40K = 4000K	V8 = 120-277V	D = Dimming N = Non-Dimming	MS=Motion Sensor EM=Emergency Backup NA=None	BZ = Bronze BK = Black	CM=Ceiling Mount HM=Hook Mount
CHL550	150W 200W	50K = 5000K					

ORDERING INFORMATION (CHL540-80W-40K-V8-D-MS-BZ-CM)



SCALE: 1 INCH = 20 FT. LIGHT LOSS FACTOR = 1.00
MAXIMUM CALCULATED VALUE = 18.52 FC
FOOT CANDLES: 5 10 15 20



SCALE: 1 INCH = 25 FT. LIGHT LOSS FACTOR = 1.00
MAXIMUM CALCULATED VALUE = 22.68 FC
FOOT CANDLES: 5 10 15 20

- Industrial grade impact & weather resistant fixture with die cast aluminum housings and glare free polycarbonate lenses
- Dedicated range of mounting accessories for surface mount, hook mount
- Plug-and-play sensor and emergency battery backup as optional
- 0-10v dimming as standard @ DLC 5.1 standard
- Name brand chip and driver @ 5 year warranty

ADDITIONAL PHOTOMETRICS AVAILABLE ONLINE

LED BOLLARDS

DESCRIPTION



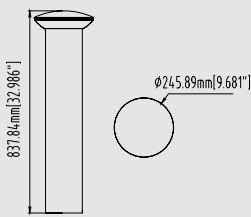
PROFESSIONAL OUTDOOR LIGHT

MODEL: RBL400/SSB600/TRB600

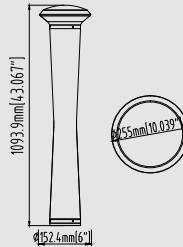


NOMENCLATURE	LUMENS(LM)	EFFICACY(LPW)	INPUT VOLTAGE	CRI	DISTRIBUTION	EQUIVALENCY(W)	OPERATING TEMP	WARRANTY
RBL400-25W	3600LM	UP TO 140LPW	120-277V,347/480V	>70	180°, 360°	70W MH	-30-40°C	5 YEARS
SSB600-25W	3600LM	UP TO 140LPW	120-277V,347/480V	>70	270°	70W MH	-30-40°C	5 YEARS
SSB600-35W	4800LM	UP TO 140LPW	120-277V,347/480V	>70	360°	70W MH	-30-40°C	5 YEARS
TRB600-25W	3600LM	UP TO 140LPW	120-277V,347/480V	>70	180°, 360°	70W MH	-30-40°C	5 YEARS

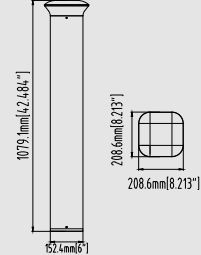
RBL400



TBR600



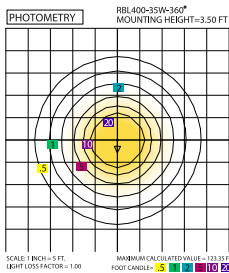
SSB600



MODEL	WATTAGE	CCT	VOLTAGE	DIMMING OPTION	DISTRIBUTION BEAM ANGLE	SURGE PROTECTOR
RBL400	25W	30K = 3000K	V8 = 120-277V	D = Dimming	R0 = 360°	NA = None
SSB600	35W	40K = 4000K	V7 = 347/480V	N = Non-Dimming	R3 = 180°	S1 = Surge Protector
TBR600		50K = 5000K			R5 = 270°	

HOUSING FINISH		HEIGHT
BZ = Bronze	SL = Silver	32=32"
WH = White	GY = Gray	42=42"
BK = Black		

ORDERING INFORMATION (RBL400-25W-40K-V8-N-R3-S1-BZ-38)



- Impact & weather resistant fixture with Aluminum housings and polycarbonate lenses.
- Custom tapered shapes available-square,round options available
- 180/270/360 degree lighting distribution available
- Wattage field adjustable and 0-10v dimming as standard @ DLC 5.1 Premium
- Name brand chip and high quality driver @ 5 year warranty

ADDITIONAL PHOTOMETRICS AVAILABLE ONLINE

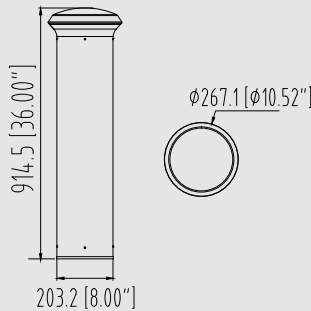
LED BOLLARDS DESCRIPTION

PROFESSIONAL OUTDOOR LIGHT

MODEL: SRB800



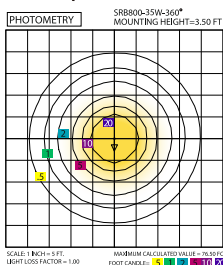
NOMENCLATURE	LUMENS(LM)	EFFICACY(LPW)	INPUT VOLTAGE	CRI	DISTRIBUTION	EQUIVALENCY(W)	OPERATING TEMP	WARRANTY
SRB800-20W	2400LM	UP TO 138LPW	120-277V,347/480V	>70	180°	50W MH	-30-40°C	5 YEARS
SRB800-35W	4600LM	UP TO 138LPW	120-277V,347/480V	>70	360°	100W MH	-30-40°C	5 YEARS



MODEL	WATTAGE	CCT	VOLTAGE	DIMMING OPTION	DISTRIBUTION BEAM ANGLE	SURGE PROTECTOR
SRB800	20W 35W	30K = 3000K 40K = 4000K 50K = 5000K	V8 = 120-277V V7 = 347/480V	D = Dimming N = Non-Dimming	R0 = 360° R3 = 180°	NA = None S1 = Surge Protector

HOUSING FINISH		HEIGHT
BZ = Bronze	SL = Silver	36=36"
WH = White	GY = Gray	42=42"
BK = Black		

ORDERING INFORMATION (SRB800-20W-40K-V8-N-R3-S1-BZ-38)



- Impact & weather resistant fixture with Aluminum housings and polycarbonate lenses.
- 180/360 degree lighting distribution available
- 0-10v dimming as standard @ DLC 5.1 Premium
- Name Brand chip and high quality driver @ 5 year warranty

ADDITIONAL PHOTOMETRICS AVAILABLE ONLINE

SPORT LIGHT DESCRIPTION

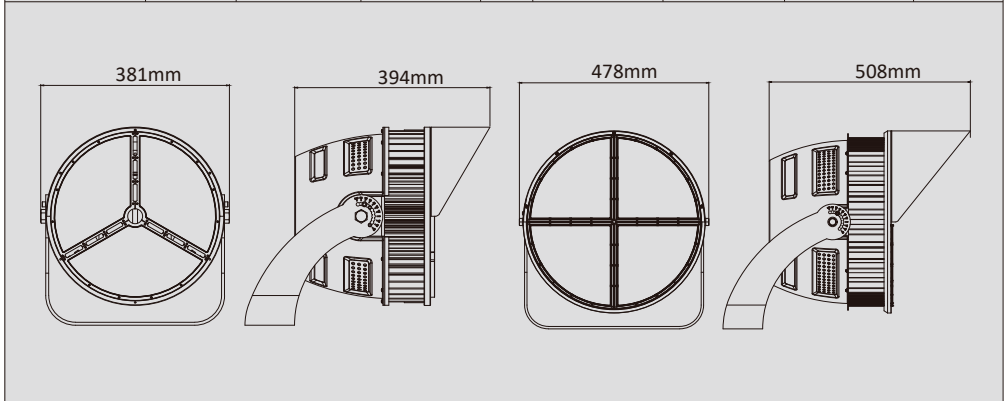


PROFESSIONAL OUTDOOR LIGHT

MODEL: FLL800/FLL810



NOMENCLATURE	LUMENS(LM)	EFFICACY(LPW)	INPUT VOLTAGE	CRI	DISTRIBUTION	EQUIVALENCY(W)	OPERATING TEMP	WARRANTY
FLL800-300W	42000LM	UP TO 135LPW	120-277V/ 347-480V	>70	10°30°	50W MH	-30-40°C	5 YEARS
FLL800-400W	56000LM	UP TO 135LPW	120-277V/ 347-480V	>70	10°30°	50W MH	-30-40°C	5 YEARS
FLL800-500W	70000LM	UP TO 135LPW	120-277V/ 347-480V	>70	10°30°	50W MH	-30-40°C	5 YEARS
FLL810-750W	105000LM	UP TO 135LPW	120-277V/ 347-480V	>70	10°15°25°40°80°	50W MH	-30-40°C	5 YEARS
FLL810-1000W	140000LM	UP TO 135LPW	120-277V/ 347-480V	>70	10°15°25°40°80°	100W MH	-30-40°C	5 YEARS
FLL810-1200W	168000LM	UP TO 135LPW	120-277V/ 347-480V	>70	10°15°25°40°80°	100W MH	-30-40°C	5 YEARS



- Housing: integrated fin cooling heatsink design, greatly reduces thermal density and LED junction temperature. UV resistance and stabilized powder coated finish in pretty appearance
- Optical Lens: High light transmittance PC, anti-UV and fire resistant, beam angle 10°/30° for FLL800, 10°/15°/25°/40°/80° for FLL810
- Lightsource: High efficiency up to 135lm/w, Energy savings up to 60% over traditional HID sources for labor and material
- Driver: 120-277or 347-480V 50/60Hz,PF≥0.9; THD<20%; 0-10V dimming options compatible with all leading lighting control systems
- Certificate: UL/CUL/DLC and FCC/CE/CB/SAA/ICES/EMC
- Lumileds chip and name brand driver @ 5 year warranty

SPORT LIGHT DESCRIPTION



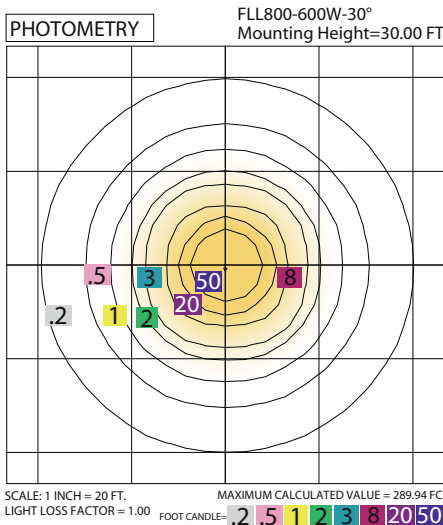
PROFESSIONAL OUTDOOR LIGHT

MODEL: FLL800/FLL810



MODEL	WATTAGE	DISTRIBUTION	CCT	VOLTAGE	DIMMING OPTION	OPTIONS	HOUSING FINISH
FLL800	300W	10 = 10°	30K = 4000K 40K = 4000K 50K = 5000K 57K = 5700K	V8 = 120-277V V9 = 347-480V	D = Dimming N = Non-Dimming	PC = Photocell NA = None	BZ = B ronze SL = Silver WH = White GY = Gray BK = Black
	400W 500W	30 = 30°					
FLL810	750W 1000W 1200W	10 = 10° 15 = 15° 25 = 25° 40 = 40° 80 = 80°					

ORDERING INFORMATION (FLL800-600W-40K-V8-N-PC-BZ)



FLOOD LIGHT DESCRIPTION

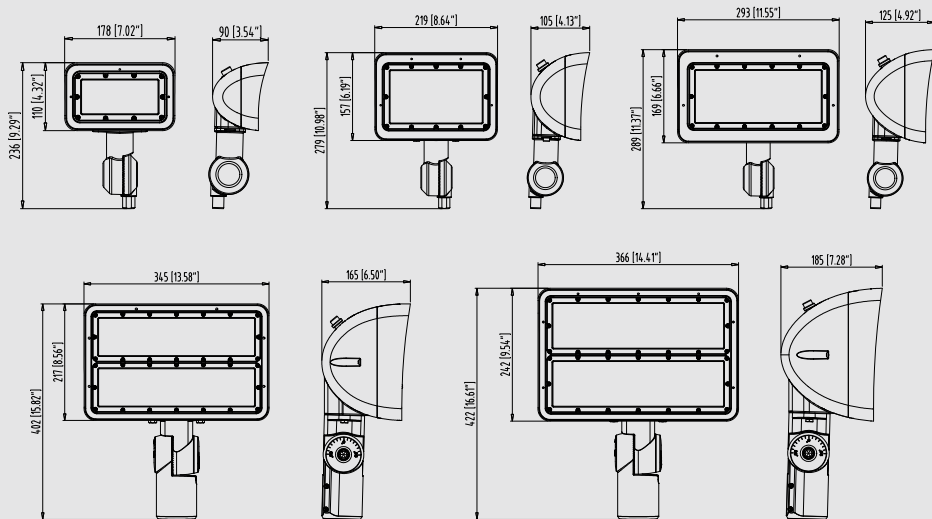


COMMERCIAL OUTDOOR LIGHT

MODEL: FLL450/FLL460/FLL470/FLL480/FLL490



NOMENCLATURE	LUMENS(LM)	EFFICACY(LPW)	INPUT VOLTAGE	CRI	DISTRIBUTION	EQUIVALENCY(W)	OPERATING TEMP	WARRANTY
FLL450-20W	2700LM	UP TO 135LPW	120-277V	>70	3 X 3 6 X 6	100W MH	-40-40°C	5 YEARS
FLL460-50W	6750LM	UP TO 135LPW	120-277V 347-480V	>70	3 X 3 6 X 6	175W MH	-40-40°C	5 YEARS
FLL470-80W	10800LM	UP TO 135LPW	120-277V 347-480V	>70	3 X 3 6 X 6	250W MH	-40-40°C	5 YEARS
FLL480-120W	16200LM	UP TO 135LPW	120-277V 347-480V	>70	3 X 3 6 X 6	400W MH	-40-40°C	5 YEARS
FLL480-150W	20250LM	UP TO 135LPW	120-277V 347-480V	>70	3 X 3 6 X 6	600W MH	-40-40°C	5 YEARS
FLL490-200W	27000LM	UP TO 135LPW	120-277V 347-480V	>70	3 X 3 6 X 6	800W MH	-40-40°C	5 YEARS



- High perform flood family with multiple mounting configurations to fit any application
- Impact & weather resistant fixture with die cast housings and polycarbonate lenses
- Photocell as optional
- Name brand 3030 chip and high quality driver @ 5 year warranty

FLOOD LIGHT DESCRIPTION



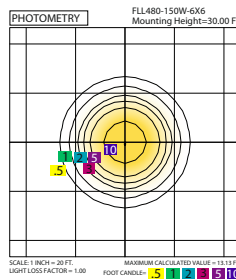
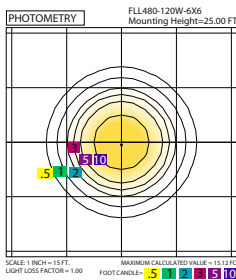
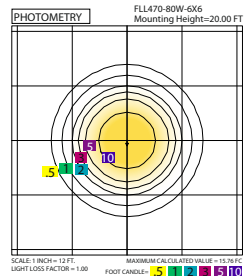
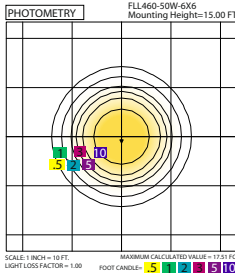
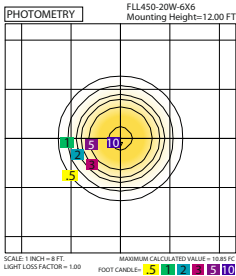
COMMERCIAL OUTDOOR LIGHT

MODEL: FLL450/FLL460/FLL470/FLL480/FLL490



MODEL	WATTAGE	CCT	VOLTAGE	DIMMING OPTION	OPTIONS	OPTIC	SURGE PROTECTOR
FLL450	20W	30K = 3000K 40K = 4000K 50K = 5000K	V8 = 120-277V V9 = 347-480V	D = Dimming N = Non-Dimming	PC = Photocell NA = None	W66= 6 X 6 N33= 3 X 3	NA = None S1 = Surge Protector
FLL460	50W						
FLL470	80W						
FLL480	120W 150W						
FLL490	200W						
HOUSING FINISH		MOUNTING					
BZ = Bronze BK = Black GY = Gray	SL = Silver WH = White	SF = Slip Fitter TR = Trunion KN = Knuckle					

ORDERING INFORMATION (FLL450-20W-30K-V8-D-PC-W66-S1-BZ-SF)



POST TOP DESCRIPTION

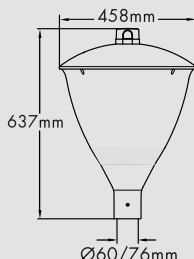
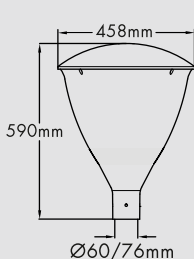


COMMERCIAL OUTDOOR LIGHT

MODEL: LSPT01



NOMENCLATURE	LUMENS(LM)	EFFICACY(LPW)	INPUT VOLTAGE	CRI	DISTRIBUTION	EQUIVALENCY(W)	OPERATING TEMP	WARRANTY
LSPT01-30W	4050LM	UP TO 135LPW	120-277V	>80	T2,T3,T4,T5	100W MH	-20-50°C	5 YEARS
LSPT01-50W	6750LM	UP TO 135LPW	120-277V	>80	T2,T3,T4,T5	150W MH	-20-50°C	5 YEARS
LSPT01-80W	10800LM	UP TO 135LPW	120-277V	>80	T2,T3,T4,T5	200W MH	-20-50°C	5 YEARS

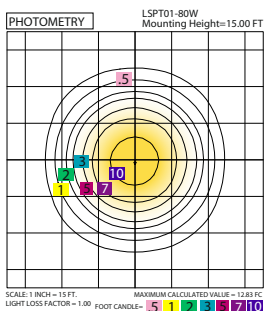


MODEL	WATTAGE	CCT	VOLTAGE	DIMMING OPTION	OPTIONS	DISTRIBUTION
LSPT01	30W 50W 80W	30K = 3000K 40K = 4000K 50K = 5000K	V8 = 120-277V	D = Dimming N = Non-Dimming	PC = Photocell NA = None	T2 = TYPE II T3 = TYPE III T4 = TYPE IV T5 = TYPE V

HOUSING FINISH

BZ = Bronze SL = Silver
WH = White GY = Gray
BK = Black

ORDERING INFORMATION (LSPT01-80W-50K-V8-D-PC-T2-BZ)



- Low weight for easy manipulation
- Pre-wired for ease of installation (one tool)
- 120° fixing screws for perfect adjustment on the pole
- Maintenance with access from above (one tool)
- A choice of options to contribute to comfort and wellbeing in urban and residential streets, city centres, pedestrian and cycle paths, parks and promenades

POST TOP DESCRIPTION

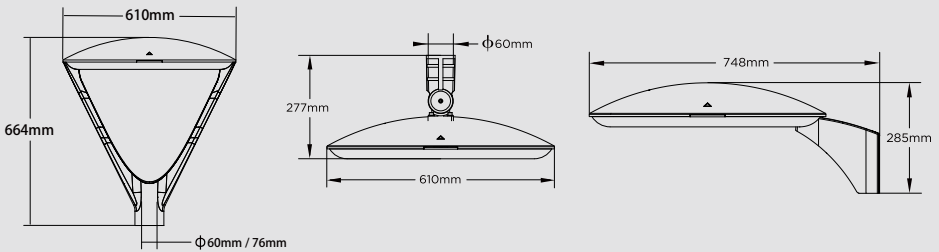


COMMERCIAL OUTDOOR LIGHT

MODEL: LSPT03



NOMENCLATURE	LUMENS(LM)	EFFICACY(LPW)	INPUT VOLTAGE	CRI	DISTRIBUTION	EQUIVALENCY(W)	OPERATING TEMP	WARRANTY
LSPT03-50W	7500LM	UP TO 150LPW	120-277V	>80	T2,T3,T4,T5	200W MH	-40-50°C	5 YEARS
LSPT03-70W	10500LM	UP TO 150LPW	120-277V	>80	T2,T3,T4,T5	250W MH	-40-50°C	5 YEARS
LSPT03-90W	13500LM	UP TO 150LPW	120-277V	>80	T2,T3,T4,T5	300W MH	-40-50°C	5 YEARS
LSPT03-120W	18000LM	UP TO 150LPW	120-277V	>80	T2,T3,T4,T5	400W MH	-40-50°C	5 YEARS
LSPT03-150W	22500LM	UP TO 150LPW	120-277V	>80	T2,T3,T4,T5	500W MH	-40-50°C	5 YEARS
LSPT03-200W	30000LM	UP TO 150LPW	120-277V	>80	T2,T3,T4,T5	600W MH	-40-50°C	5 YEARS



- Low weight for easy manipulation
- Pre-wired for ease of installation (one tool)
- 120° fixing screws for perfect adjustment on the pole · Maintenance with access from above (one tool)
- A choice of options to contribute to comfort and wellbeing in urban and residential streets, city centres, pedestrian and cycle paths, parks and promenades

POST TOP DESCRIPTION



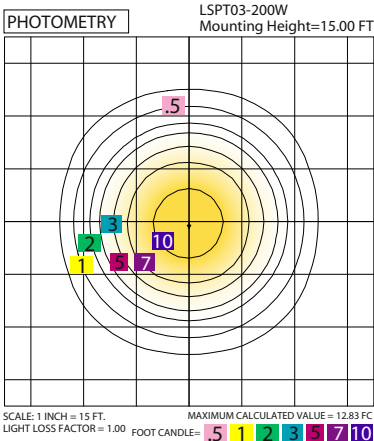
COMMERCIAL OUTDOOR LIGHT

MODEL: LSPT03



MODEL	WATTAGE	CCT	VOLTAGE	DIMMING OPTION	OPTIONS	DISTRIBUTION
LSPT03	50W	30K = 3000K 40K = 4000K 50K = 5000K	V8 = 120-277V	D = Dimming N = Non-Dimming	PC = Photocell NA = None	T2 = TYPE II T3 = TYPE III T4 = TYPE IV T5 = TYPE V
	70W					
	90W					
	120W					
	150W					
	200W					
HOUSING FINISH		MOUNTING				
BZ = Bronze BK = Black GY = Gray	SL = Silver WH = White	BM = Bracket Mount PDM = Pendant Mount	SM = Side Mount PLM = Pole Mount			

ORDERING INFORMATION (LSPT03-200W-50K-V8-D-PC-T2-BZ-SM)



MOUNTINGS/ACCESSORIES



Bracket Mount



Side Mount



Pendant Mount



Pole Mount



SPECIAL LIGHTS

VAPOR PROOF DESCRIPTION

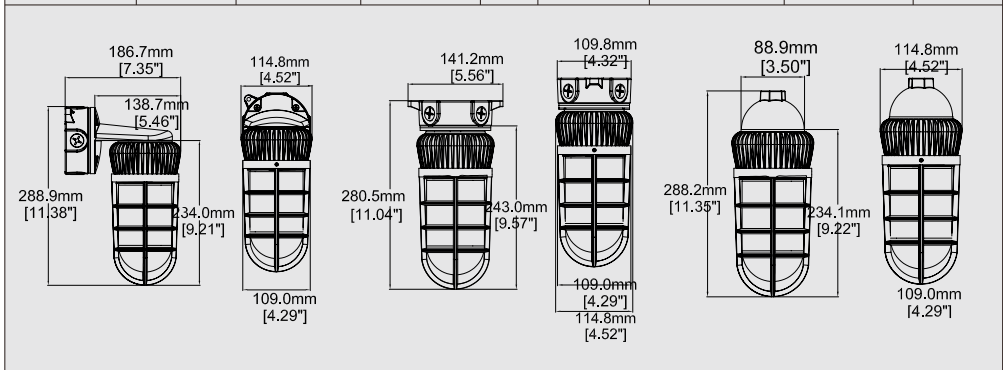


SPECIAL OUTDOOR LIGHT

MODEL: VPL

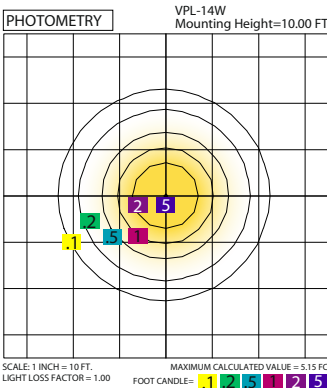


NOMENCLATURE	LUMENS(LM)	EFFICACY(LPW)	INPUT VOLTAGE	CRI	DISTRIBUTION	EQUIVALENCY(W)	OPERATING TEMP	WARRANTY
VPL-14W	1412LM	UP TO 103LPW	120-277V	>70	GG,FG,FP	35W MH	-30-40 C	5 YEARS



MODEL	WATTAGE	CCT	VOLTAGE	DIMMING OPTION	DISTRIBUTION	HOUSING FINISH	MOUNTING
VPL	14W	30K = 3000K 40K = 4000K 50K = 5000K	V8 = 120-277V	N = Non-Dimming D = Dimming	FP = Frost Polycarbonate GG = Glass Guard FG = Frost PC + Guard	SB = Sand Blast	PM = Pendant CM = Ceiling WM = Wall

ORDERING INFORMATION (VPL-14W-40K-V8-D-FP-SB-PM)



- Designed with precision die-cast aluminum housing for industrial and architectural applications
- Three different types of mounts are available and comes with a wide range of globe and guard accessories
- Ideal for entrances, stairwells, man doors, outdoor walkways, tunnels, and service areas
- High quality chip and driver @ 5 year warranty

ADDITIONAL PHOTOMETRICS AVAILABLE ONLINE

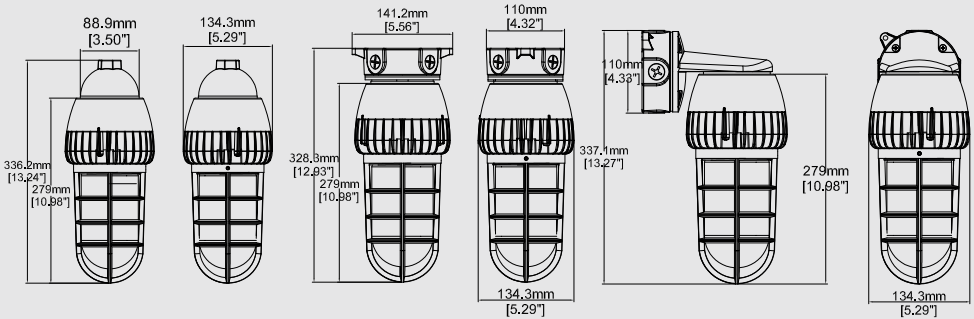
VAPOR PROOF DESCRIPTION

SPECIAL OUTDOOR LIGHT

MODEL: VPL

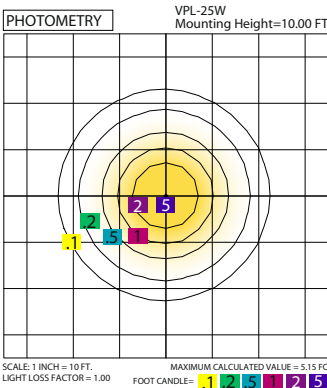


NOMENCLATURE	LUMENS(LM)	EFFICACY(LPW)	INPUT VOLTAGE	CRI	DISTRIBUTION	EQUIVALENCY(W)	OPERATING TEMP	WARRANTY
VPL-25W	2670LM	UP TO 105LPW	120-277V	>70	FP	50W MH	-30-40 C	5 YEARS



MODEL	WATTAGE	CCT	VOLTAGE	DIMMING OPTION	DISTRIBUTION	HOUSING FINISH	MOUNTING
VPL	25W	30K = 3000K 40K = 4000K 50K = 5000K	V8 = 120-277V	N = Non-Dimming D = Dimming	FP = Frost Polycarbonate	SB = Sand Blast	PM = Pendant CM = Ceiling WM = Wall

ORDERING INFORMATION (VPL-25W-40K-V8-D-FP-SB-PM)



- Designed with precision die-cast aluminum housing for industrial and architectural applications
- Three different types of mounts are available and comes with a wide range of globe and guard accessories
- Ideal for entrances, stairwells, man doors, outdoor walkways, tunnels, and service areas
- High quality chip and driver @ 5 year warranty

ADDITIONAL PHOTOMETRICS AVAILABLE ONLINE

DOCK LIGHT DESCRIPTION



SPECIAL OUTDOOR LIGHT

MODEL: DLL 320



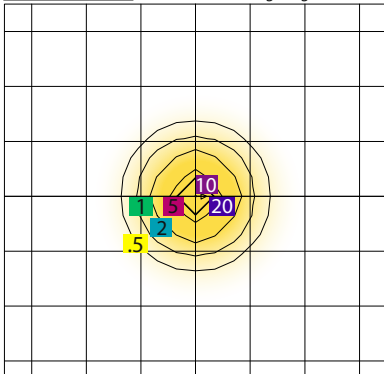
NOMENCLATURE	LUMENS(LM)	EFFICACY(LPW)	INPUT VOLTAGE	CRI	DISTRIBUTION	EQUIVALENCY(W)	OPERATING TEMP	WARRANTY
DLL320-23W	2913LM	UP TO 119LPW	120V-277V	>70	2HX2V	70W MH	-30-40°C	5 YEARS

MODEL	WATTAGE	CCT	VOLTAGE	DIMMING OPTION	MECHANICAL ACCESSORIES	HOUSING FINISH	MOUNTING
DLL320	23W	30K = 3000K 40K = 4000K 50K = 5000K	V8 =120V-277V	N =Non-Dimming	WG = Wire Guard ST = Standard	BZ = B ronze WH = White BK = Black SL = Silver GY = Gray YE = Yellow	60 = 60" Arm 42 = 42" Arm NA = None

ORDERING INFORMATION (DLL320-23W-40K-V8-N-ST-YE-42)

PHOTOMETRY

DLL-320-23W-2HX2V
Mounting Height=10.00 FT



SCALE: 1 INCH = 10 FT.
LIGHT LOSS FACTOR = 1.00

MAXIMUM CALCULATED VALUE = 237.42 FC
FOOT CANDLE = 5 10 20 50

- Impact & weather resistant fixture with die cast housings and tempered glass lenses
- Individual optics for controlled beam
- Optional wall mount arm with different lengths(42" and 60")
- High quality chip and driver @ 5 year warranty

GAS STATION LIGHT DESCRIPTION

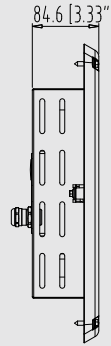
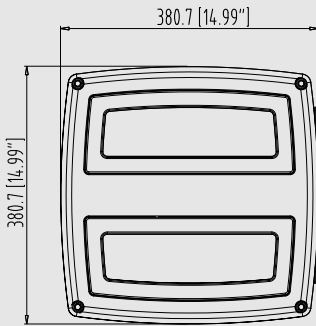


SPECIAL OUTDOOR LIGHT

MODEL: CVL700

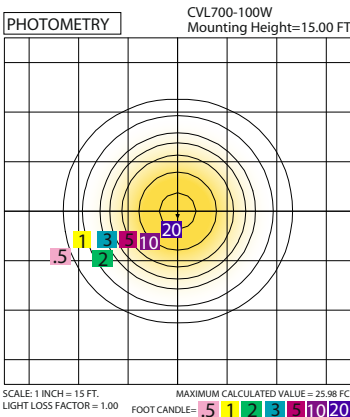


NOMENCLATURE	LUMENS(LM)	EFFICACY(LPW)	INPUT VOLTAGE	CRI	DISTRIBUTION	EQUIVALENCY(W)	OPERATING TEMP	WARRANTY
CVL700-100W	16000LM	UP TO 160LPW	120-277V	>70	N/A	400W MH	-30-40°C	5 YEARS



MODEL	WATTAGE	CCT	VOLTAGE	DIMMING OPTION	HOUSING FINISH
CVL700	100W	30K = 3000K 40K = 4000K 50K = 5000K	V8 = 120-277V	D = Dimming N = Non-Dimming	BZ = B ronze SL = Silver WH = White GY = Gray BK = Black

ORDERING INFORMATION (CVL700-100W-40K-V8-N-BZ)



- Impact & weather resistant fixture with die cast housings and clear tempered glass lenses
- Easy hook bracket and retainable self-drilling screw was included for hands free wiring and easy installation
- Good for close deck gas station
- Lumileds 3030 LED and name brand driver @ 5 year warranty

GAS STATION LIGHT DESCRIPTION

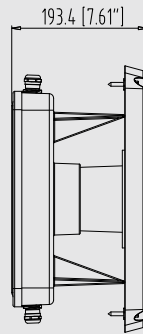
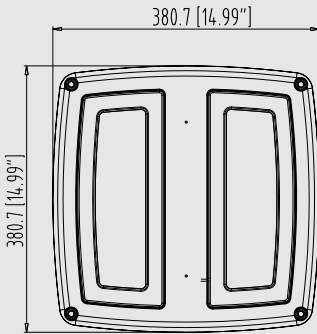


SPECIAL OUTDOOR LIGHT

MODEL: CVL800

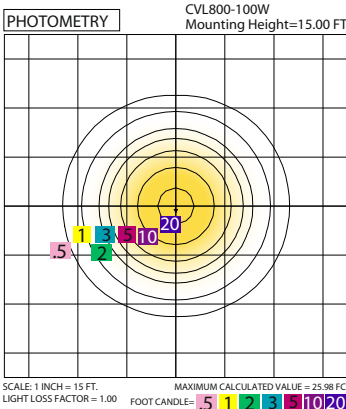


NOMENCLATURE	LUMENS(LM)	EFFICACY(LPW)	INPUT VOLTAGE	CRI	DISTRIBUTION	EQUIVALENCY(W)	OPERATING TEMP	WARRANTY
CVL800-100W	16000LM	UP TO 160LPW	120-277V	>70	N/A	400W MH	-30-40°C	5 YEARS



MODEL	WATTAGE	CCT	VOLTAGE	DIMMING OPTION	HOUSING FINISH
CVL800	100W	40K = 4000K 50K = 5000K	V8 = 120-277V	D = Dimming N = Non-Dimming	BZ = B ronze SL = Silver WH = White GY = Gray BK = Black

ORDERING INFORMATION (CVL800-100W-40K-V8-N-BZ)



- Impact & weather resistant fixture with die cast housings and clear tempered glass lenses
- Easy hook bracket and retainable self-drilling screw was included for hands free wiring and easy installation
- Good performance chip and name brand driver @ 5 year warranty

GAS STATION LIGHT DESCRIPTION

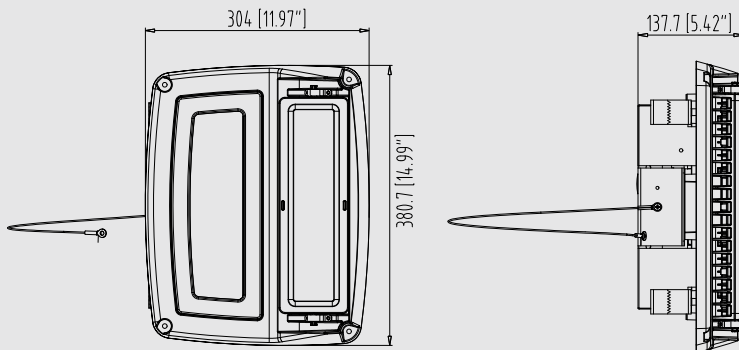


SPECIAL OUTDOOR LIGHT

MODEL: CVL710

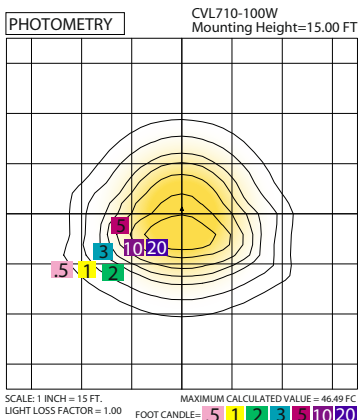


NOMENCLATURE	LUMENS(LM)	EFFICACY(LPW)	INPUT VOLTAGE	CRI	DISTRIBUTION	EQUIVALENCY(W)	OPERATING TEMP	WARRANTY
CVL710-100W	16000LM	UP TO 160LPW	120-277V	>70	N/A	400W MH	-30-40°C	5 YEARS



MODEL	WATTAGE	CCT	VOLTAGE	DIMMING OPTION	HOUSING FINISH
CVL710	100W	40K = 4000K 50K = 5000K	V8 = 120-277V	D = Dimming N = Non-Dimming	BZ = B ronze SL = Silver WH = White GY = Gray BK = Black

ORDERING INFORMATION (CVL710-100W-40K-V8-N-BZ)



- Impact & weather resistant fixture with die cast housings and clear tempered glass lenses
- Easy hook bracket and retainable self-drilling screw was included for hands free wiring and easy installation.
- An up to 40° pivot head to maximize the light on petrol pump.
- Good for close deck gas station
- Good performance chip and name brand driver @ 5 year warranty

GAS STATION LIGHT DESCRIPTION

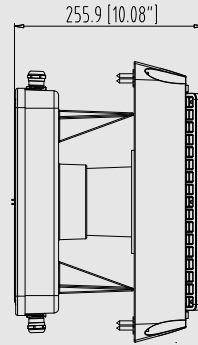
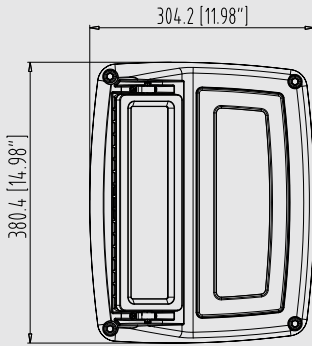


SPECIAL OUTDOOR LIGHT

MODEL: CVL810

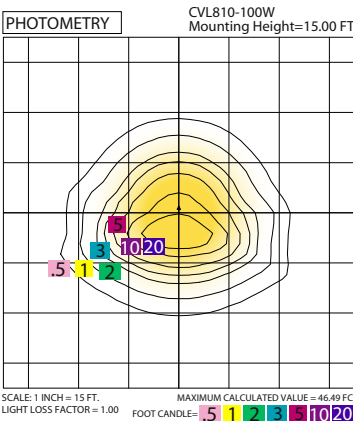


NOMENCLATURE	LUMENS(LM)	EFFICACY(LPW)	INPUT VOLTAGE	CRI	DISTRIBUTION	EQUIVALENCY(W)	OPERATING TEMP	WARRANTY
CVL810-100W	16000LM	UP TO 160LPW	120-277V	>70	N/A	400W MH	-30-40°C	5 YEARS



MODEL	WATTAGE	CCT	VOLTAGE	DIMMING OPTION	HOUSING FINISH
CVL810	100W	40K = 4000K 50K = 5000K	V8 = 120-277V	D = Dimming N = Non-Dimming	BZ = B ronze SL = Silver WH = White GY = Gray BK = Black

ORDERING INFORMATION (CVL810-100W-40K-V8-N-BZ)



- Impact & weather resistant fixture with die cast housings and clear tempered glass lenses
- Easy hook bracket and retainable self-drilling screw was included for hands free wiring and easy installation.
- An up to 40° pivot head to maximize the light on petrol pump.
- Good performance chip and name brand driver @ 5 year warranty



MORELUX LIGHTING LIMITED

Add: 17/F Guangbo Mansion, #1357, Yinxian Avenue
Yinzhou District, Ningbo, China 315100

Tel: +86-574-87715000 / Fax: +86-574-87717000

Email: info@morelux.com Web: www.morelux.com